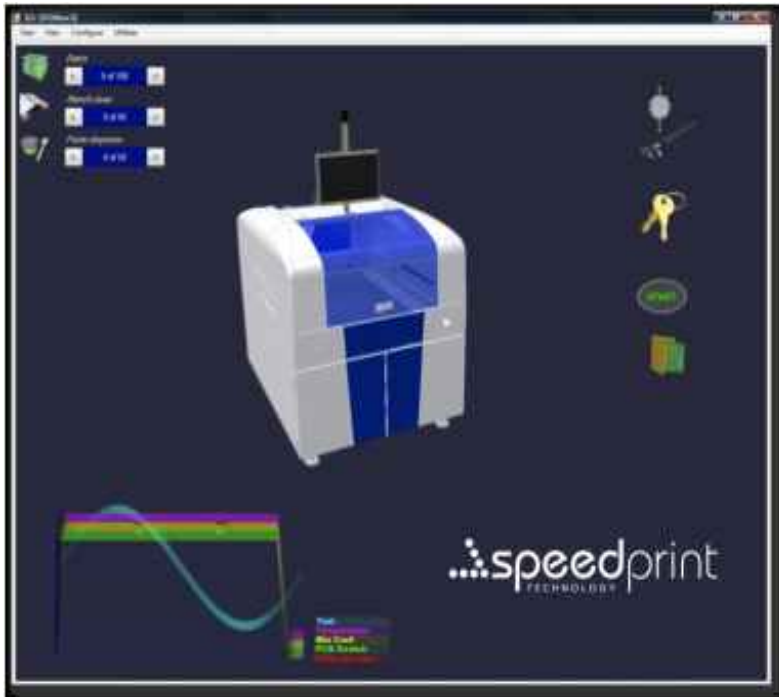




The SP700avi stencil printer combines Speedprints commitment to high performance and reliability with outstanding value. The system has been designed to cope with the rigors of high volume SMT production whilst incorporating the flexibility needed in high-mix, quick product set-up & changeover environments.

The SP700avi has been designed with ease of use, maintenance and low cost of ownership in mind. The system utilises the most advanced drive control technology available, including 1 micron resolution Linear encoders on all Axes, together with a suite of intuitive software that enables total control of the printing process.

The printer is fully equipped, as standard, with many features such as automatic rail width adjust, auto stencil loading and a fully programmable Under Stencil Cleaner.



The SP700avi incorporates 3Dc, an advanced user interface running on WINDOWS XP PRO & Vista™. In addition to the simple and intuitive nature of the interface, it also provides comprehensive self diagnostic capabilities, such as production logging and automatic fault report generation which enables 'on the fly' troubleshooting.

The Under Stencil Cleaner is a highly efficient and fully programmable standard feature of the SP700. It may be programmed to be run wet or dry and in any combination thereof.



High Precision PCB Assembly System  
Standard features

- High Precision Axe
- 1 Micron resolution Linear Encoders
- Twin Roving Cameras
- Precision Mono-fabrication
- Distributed Control Network
- 3Dc User interface
- Paste on Stencil inspection
- Fully automatic Conveyor Adjustment
- Programmable Vacuum Stencil Cleaner
- Closed Loop Dual Squeegee control
- Auto Stencil Load and eject

## High Precision Axe

Precision Linear Rail and Belt Drive provides accuracy and reliability

## 1 Micron resolution Linear Encoders

On all axes for optimum positional accuracy

### **Twin Roving Cameras**

Highly accurate and robust Vision Platform

### **Precision Mono-fabrication**

Precision engineered base structure

### **Distributed Control Network**

Localised axis control reduces cables and increases reliability

### **3Dc User interface**

The simplest and intuitive of User Interfaces

### **Paste on Stencil inspection**

Providing feedback & set up of paste replenishment, a unique feature within the Avi range

### **Fully automatic Conveyor Adjustment**

Ease and flexibility to manage most PCB sizes

### **Programmable Vacuum Stencil Cleaner**

Highly efficient wet and dry stencil cleaning system

### **Closed Loop Dual Squeegee control**

Provides full control of the Print

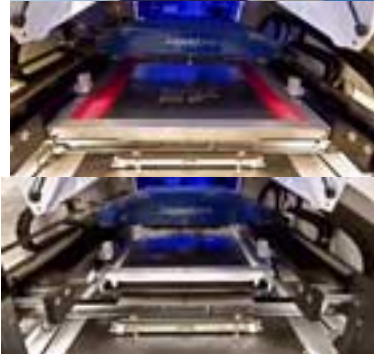
### **Auto Stencil Load and eject**

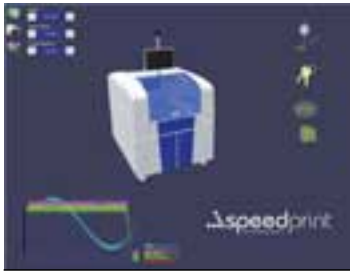
Improved speed and ease of product changeover

---

### **Images**







## Vidéo

{wmv}SP700FORWEB1with title{/wmv}

---

## Brochure

[SP700avi](#)