

eurolacer  
HIGH MIX  
PRODUCTIVITY

ii-P7



Advanced Printing Solutions



iiprint

### Speed

As fast as 5 seconds cycle time

### Under PCB Clearance

30mm underside component

### S-Track

Barcode placement for complete process traceability

Monitor With 22" Touch Screen And Intuitive ii-PS Software

### SmartCal2

90-second full calibration

### CFX & Hermes Compatibility

Latest industry communication protocols



### 2D+ Paste Inspection

Post print evaluation of solder paste deposit for presence and bridging

### Single-pass cleaning system

- ▶ Wet/Dry/Vacuum in one cycle
- ▶ Paper/Solvent level sensor
- ▶ Cassette paper change system (Optional)

# Advanced Printing Solutions

The Europlacer ii-P7 is an industry-leading screen printer renowned for its exceptional performance and unique features.

It incorporates 1-micron linear encoders on every axis delivering a consistent print, perfectly defined each time. The ii-P7 is controlled by our advanced ii-PS software and compliments both high-mix and high-volume production environments.

The ii-P7 SmartCal2 calibration system ensures perfect alignment between the PCB and the stencil. An efficient single-pass under screen cleaner will help to save time at the start of the process.

Solder paste and adhesive dispensing is enhanced via Europlacer's ADU+ which coupled with the application of barcodes with S-Track brings full traceability to your production line from the very start of the production process.

## ADu+

Precise solder paste  
and adhesive deposition

## Benefits

### Machine Simplicity

- ▶ Ultra low maintenance
- ▶ Fast set-up
- ▶ Low cost of ownership

### High Flexibility

- ▶ Traceability: **S-Track** barcode placement
- ▶ Post print additive deposition of paste and adhesive with **ADu+**
- ▶ Ideal for prototyping
- ▶ Large print area
- ▶ Faster quick-change cassette system
- ▶ Quick series changeover

### Accuracy

- ▶ Exceptional repeatability  
20µm @ 6 sigma 2Cpk
- ▶ **SmartCal2** Dual roving camera for a perfect board and stencil alignment

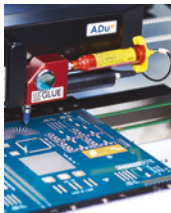
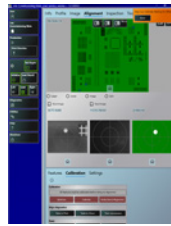
### ii-Tab Management

(coming soon)

- ▶ Real time monitoring of critical production data
- ▶ CFX interface

### Warranty

- ▶ 5 years parts warranty\*



## Key Features

### SmartCal<sup>2</sup>

In just 90 seconds, the SmartCal2 system performs a comprehensive analysis of numerous critical data points. This includes localized camera scaling of pixels per millimeter, rotation and offset calibration as well as meticulous table Z deviation assessment. Notably, SmartCal2 has significantly enhanced its data gathering capabilities, now collecting a remarkable 88% more data points to guarantee the utmost alignment accuracy and repeatability.

### ADu+

The ii-P7 screen printer can deploy the unique Advanced Dispense unit (ADu+) to dispense a wide range of mediums including paste and glue.

### S-track

S-Track allows the placement of barcode labels anywhere on the PCB after printing. This introduces traceability earlier in the line.

### SPI closed loop

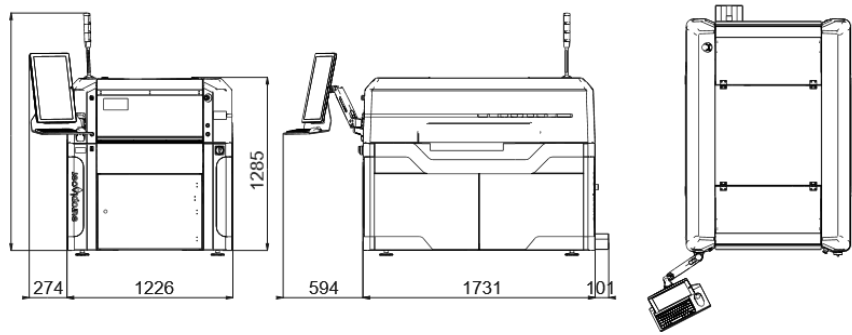
Enables neighboring SPI machine feedback to adjust printer process parameters.

### Velocity / Velocity+

A software upgrade to Velocity mode improves cycle time from 9 to 7 seconds for the efficiency of your production line. Velocity+ pushes it to an even quicker 5-second cycle time with the same level of accuracy.

### Single-pass cleaning system

The Wet/Dry/Vacuum cycle is performed in a single pass, making cleaning faster, more efficient and more economical (less consumables: paper, solvent). Paper and solvent level sensors allow you to anticipate maintenance requirements. Paper change per cassette (23 or 24") takes just 14 seconds.



## Technical Specification

PCB Specification	
Max board size	610mm (x) x 515mm (y)
Min board size	45mm (x) x 45mm (y)
Maximum PCB weight	1Kg (2.2lb)
Max PCB thickness	Up to 8mm (0.315") including 1% warpage
Min PCB thickness	0.2mm (0.008")

Software	
User interface	22" touch screen monitor
Operating system	Microsoft Windows™ 10 or higher

Facilities	
Power consumption	13 Amps
Power supply	110V – 240V
Air supply	6 bar clean air supply
Air consumption	1.4 litres per cycle without clean, 16 litres during USC
Operating temperature	10°C to 35°C (50°F to 95°F), humidity 30% to 50% relative humidity (non condensing)
Weight	650Kg
Crated weight	800Kg
Machine dimensions	1226mm x 1731mm x 1285mm (L x W x H)

Printer Specifications			
Underside component clearance	30mm	PCB separation speed	0.1-20mm/sec
Underside edge clearance	5mm	Print modes	Print/print, flood/print, print/flood
Minimum board edge clearance	3mm	Transport direction	Right-left, left-right, left-left, right-right
Machine alignment repeatability	12.5µm @ 6 sigma 2Cpk	Cycle time	9-second standard. 7-second and 5-second available via upgrade. Excludes process elements.
Full process repeatability	20µm @ 6 sigma 2Cpk	Up/down line protocol	SMEMA, Hermes
Max print area	610mm (x) x 515mm (y)	SPI closed loop	Feedback loop with 3rd party SPI machines
X/Y PCB alignment	± 5mm	Stencil paste roll inspection	Automatic validation of paste for defect prevention (standard)
Stencil image	Front and centre dedicated	PCB support	Magnetic tooling pins. Laser guided position assistance optional. 3rd party solutions available.
Stencil load/unload	Fully automatic (standard)	Camera field of view	8mm by 10mm
Stencil frame size (max)	736.6mm (29") x 736.6mm (29") max frame height 40mm	Camera system	Dual roving camera - look down/look down
Stencil frame size (min)	584mm (23") x 584mm (23") max frame height 40mm	Number of fiducials	Unlimited
Squeegee pressure	1-20Kg	Fiducial size	0.5 – 5mm
Squeegee control	Pneumatic control using proportional valve		
Print speed	5-250mm/sec		

## Options

- ▶ Single-pass cleaning system (Wet/Dry/ Vacuum cycle in a single pass) - Paper change system for single-pass cassette cleaning (23 or 24")
- ▶ 2D paste inspection
- ▶ 2D+ paste inspection with bridge detection
- ▶ Statistical Process Control (SPC)
- ▶ Laser guided magnetic tooling pins
- ▶ Snugger PCB edge clamp
- ▶ Advanced paste dispenser
- ▶ Velocity 7 secs plus print process
- ▶ Velocity+ 5 secs plus print process
- ▶ ADu+ post print deposition of glue and paste
- ▶ Product set up verification barcode
- ▶ 3rd party SPI communication loop
- ▶ S-Track barcode placement
- ▶ Product process traceability
- ▶ Single pass under screen cleaner
- ▶ ii-Tab real time monitoring

\* With maintenance agreement

As part of our policy of continuous development, specifications are subject to change without notice.

[www.europlacer.com](http://www.europlacer.com)

**Europlacer UK**  
30 Factory Road, Upton Industrial Estate,  
Poole, Dorset BH16 5SL  
United Kingdom  
contact@europacer.co.uk  
+44 (0)1202 266500

**Europlacer Asia Pacific (excl. China)**  
No. 10, Lane 3, Anzhong St.,  
MIT Industrial Park, Luzhu District,  
Taoyuan City 338  
contact-apac@europacer.com  
+886 (0)3 322 4499

**Europlacer Americas**  
4640 E. Elwood St, Suite 14,  
Phoenix, AZ 85040  
USA  
contact@europacer.com  
+1 480 672 1100

**Europlacer Italy**  
Via Flavia, 35,  
34148 Trieste  
Italy  
contact@europacer.it  
+39 (0)40 832 0563

**Europlacer France**  
Route de Cholet,  
85620 Rocheservière  
France  
contact@europacer.fr  
+33 (0)2 5131 0303

**Europlacer Spain**  
AV Atenas 127,  
19170 El Casar Guadalajara  
Spain  
contact@europacer.es  
+34 (0)673 171 249

**Europlacer China**  
Floor 1, Building 1, No.80 Huashen Road,  
Shanghai, Waigaoqiao, Free Trade Zone,  
200131, China  
contact-china@europacer.com  
+86 (021) 5868 3500

**europacer**  
HIGH MIX  
PRODUCTIVITY