

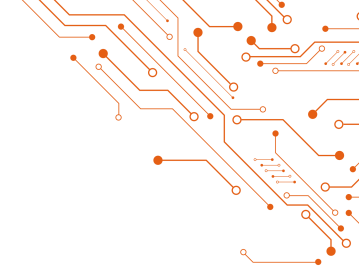


Compa**CLEAN** II

Config Guide

Updated January 2025

Plan 34



TOP AND
BOTTOM SPRAY



OSCILLATION



HOT AIR
DRYER



TRACEABILITY



Automatic cleaning machine

Maintenance cleaning

Single chamber Spray-In-Air technology



PALLETS



MECHANICAL
PARTS

Features

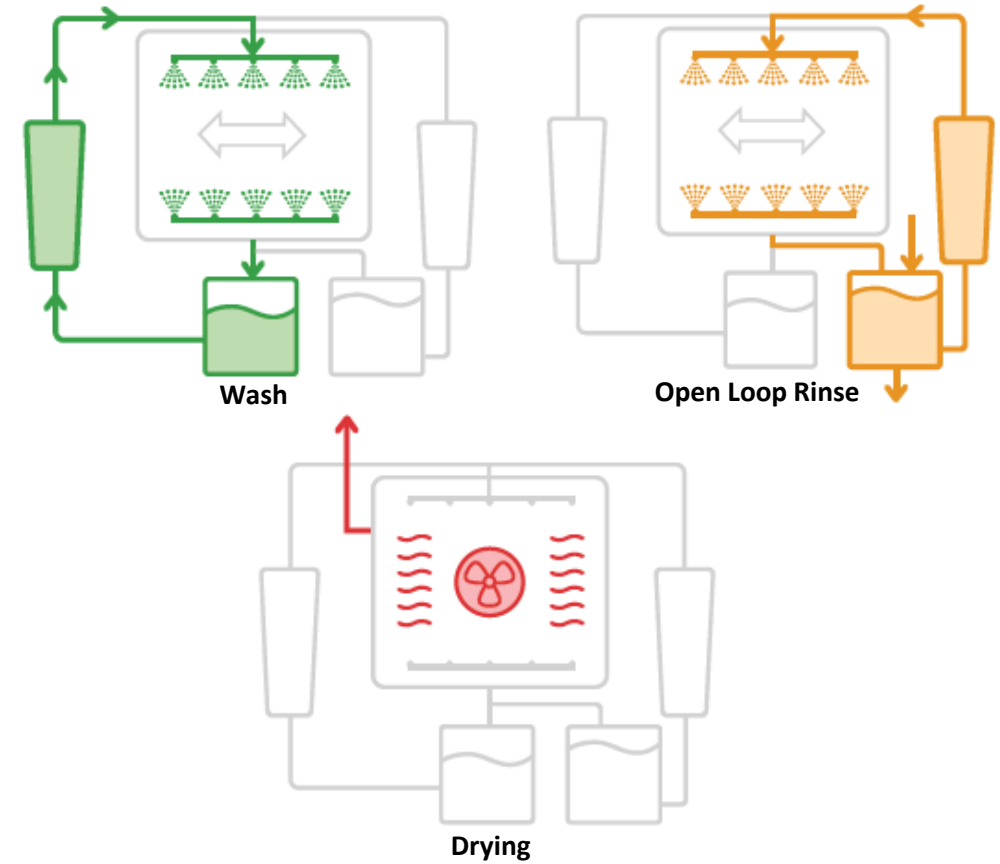
- Automatic cleaning machine for water-based chemicals
- 3 stage process: Wash, Rinse, Drying
- Conventional drying
- Semi-open rinsing system
- Ideal for soldering pallets
- Control SW language mutations

Applications

- Cleaning of soldering pallets
- Cleaning of soldering frames
- Cleaning of coating pallets
- Fine degreasing of mechanical parts

Parameters

Machine dimensions W x L x H	1 060 x 1 680 x 2 220 mm
Weight (without liquid)	440 kg
Weight (with liquid)	580 kg
Maximum authorized load of basket	25 kg
Power supply voltage	3x 400V/230V 50Hz, 3x 208/120V 60Hz



CompaCLEAN II	MECHANICAL FILTERS			
	Wash		1 st Rinse	
	2	5 µm 10" length	1	1 µm 10" length

Base

VM-00008008-X

CompaCLEAN II: Wash + Tap Water Rinse + Drying

- Spray-In-Air cleaning system
- Heating of Wash up to 60°C
- Heating of Rinse up to 40°C
- Drying up to 110°C
- Central stop button
- Wash and rinse tanks
- 1pc lower basket



Power supply

VM-00009040-X

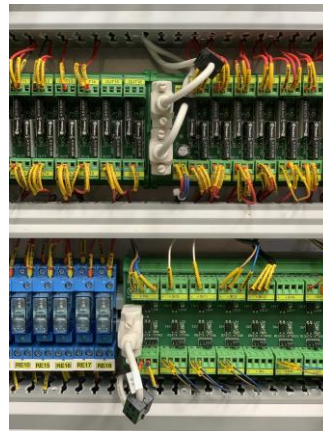
Power Supply 230/400VAC, 50/60Hz

- Switchboard, electrical wiring

VM-00009041-X

Power Supply 120/208VAC, 60Hz

- Switchboard, electrical wiring



Pumps

VM-00009027-X

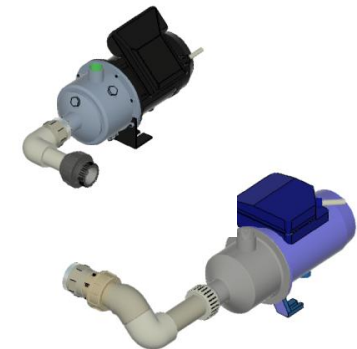
Pumps 50Hz

- Pumps for liquid tanks

VM-00009037-X

Pumps 60Hz

- Pumps for liquid tanks



Door selection

VM-00007384-X

Stainless steel door standard

- Door without a window

VM-00001599-X

Stainless steel door with window and light

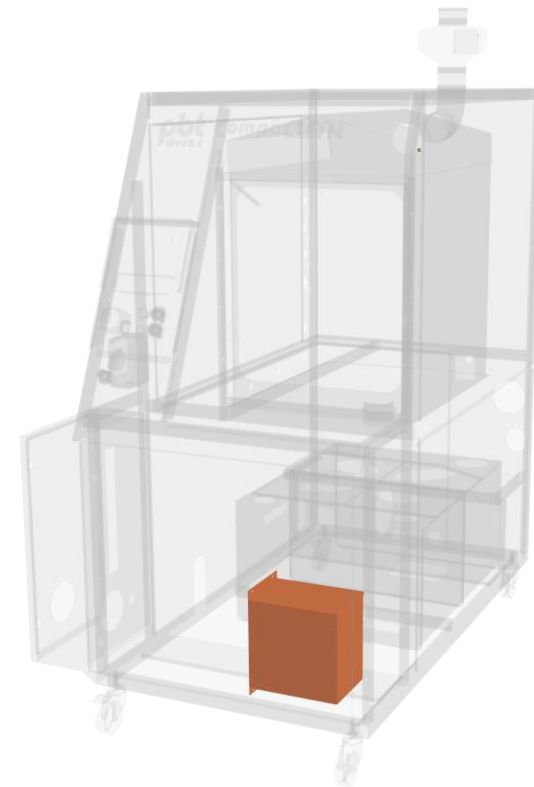
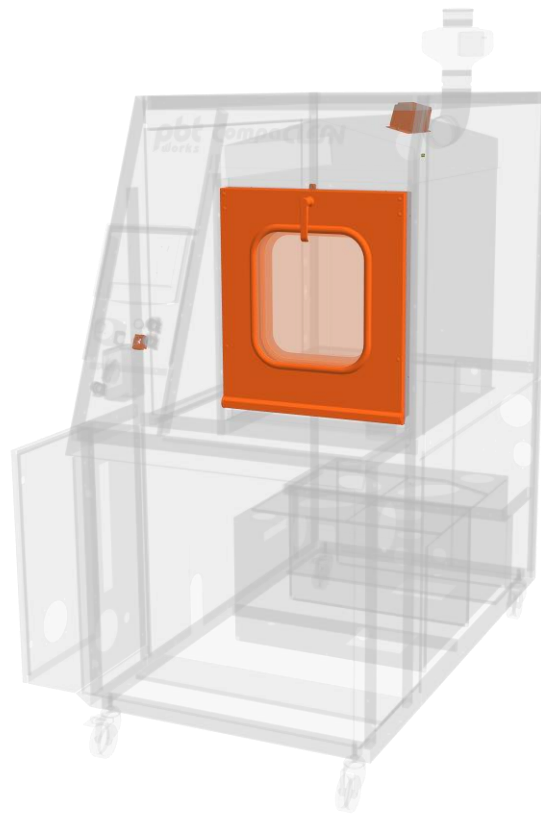
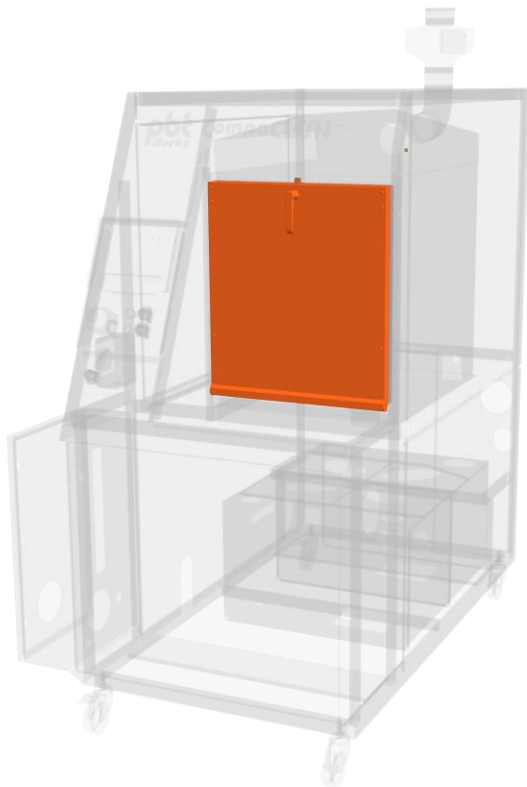
- Door with a window and chamber light

Control system

VM-00006263-X

Control System

- Built-in PC with Windows OS (Win10)
- PBT Works machine control software

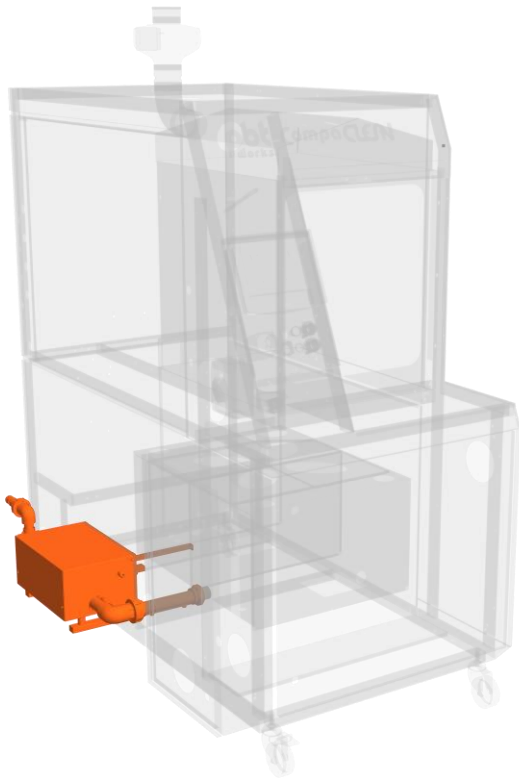


Drain pump

VM-00007525-X

Drain pump for rinse 230V-50Hz

- For easy draining of waste-water from rinse tank into drainage
- Recommended for open loop rinse with distant drainage
- Max pump capacity is 30 L/min

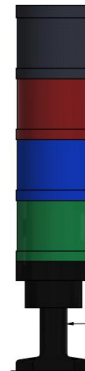


Signal tower

VM-00001607-X

Signal tower standard (green/blue/red)

- Audio and visual effects to signal individual processes



Spillage tray

VM-00007423-X

Spillage tray with leakage detection sensor

- Metal tray under the machine to hold possible leakage
- Sensor which indicates leakage from machine/tanks/pipes incl. acoustic signal
- Capacity up to 95 L of liquid

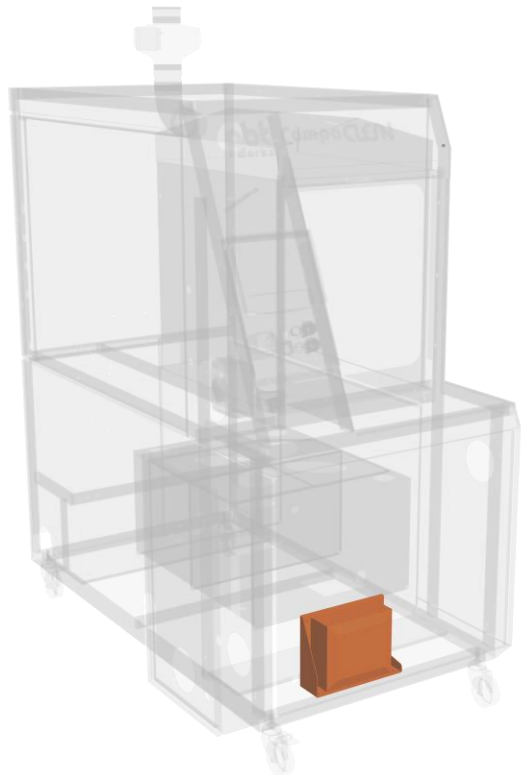


UPS

VM-00001613-X

UPS for control system backup

- Control PC power supply backup (in case of power cut, ensures safe PC shut down)



XML Online Traceability

VM-00010813-X

Traceability XML ONLINE prep kit CC

- Preparation kit for later retrofitting of XML Traceability
- This optional item is to be ordered with the machine, for future installation of traceability

VX-00000027-X

Traceability XML ONLINE CC

- Designed for tracking cleaned items and allowing automatization of the cleaning process
- Automatic cleaning program selection based on the batch code
- NUC PC can be connected to LAN/Internet without any restrictions (for Windows and driver updates etc.)
- Machine standard control PC is safely separated from the Internet
- Multi-format IR code scanner – can read barcodes, DM and QR codes, etc.
- Traceability XML files are sent to NUC PC for further processing and backed-up on the standard PC
- XML files provide great opportunity for further machine processing and data analysis



```

▼ <Wash>
  ▼ <General>
    <Loop>1</Loop>
    <Temperature>60</Temperature>
    <Conductivity>1</Conductivity>
  </General>
  ▼ <Step_0>
    <Time>600</Time>
    <Action>Spray</Action>
    <Outlet>Wash</Outlet>
    <AirTemperature>60</AirTemperature>
    <Filling_Level>0</Filling_Level>
    <AD_Volume>0</AD_Volume>
    <AD_Concentration>25</AD_Concentration>
    <Empty_Level>0</Empty_Level>
    <Oscilation>ON</Oscilation>
    <Valve_Chamber>ON</Valve_Chamber>
  </Step_0>

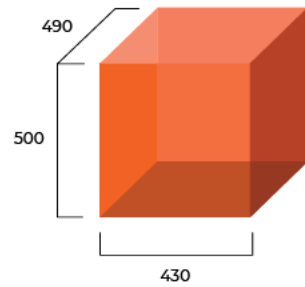
```

Clamping

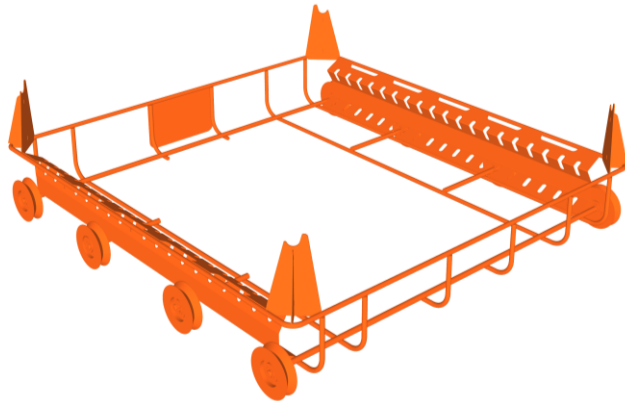
VM-0008845-X

Extra lower basket

- 1pc included in machine base
- Maximum weight of all objects in one basket 25 kg

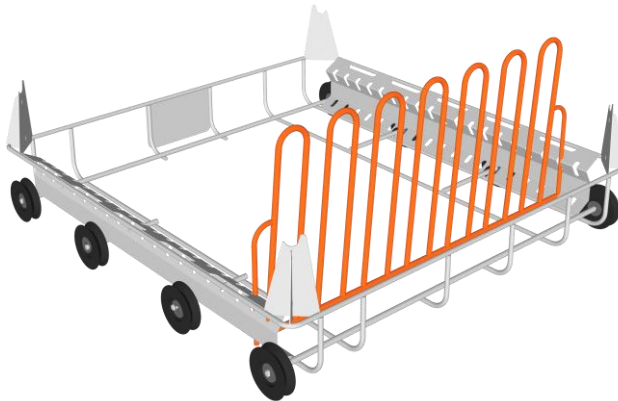


Standard clamping usable space



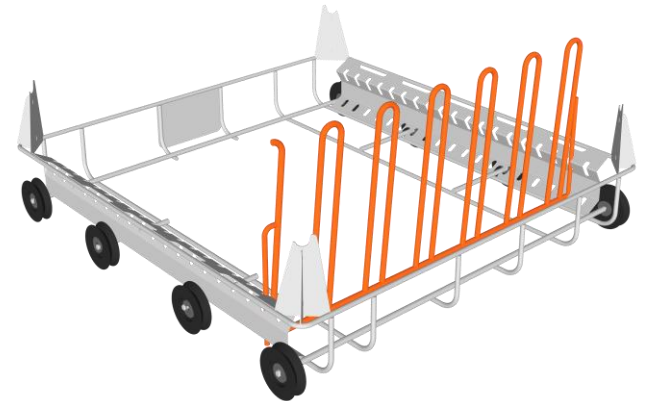
VM-0008927-X

Pallet separator into basket 6 positions, 20 mm spacing



VM-0008928-X

Pallet separator into basket 6 positions, 40 mm spacing



Packing

VM-00008955-X

Transport wooden box incl. packing cost 1286 x 2190 x 2283 mm

- Standard wooden box
- Including HT (heat treatment)
- Including Shockwatch shipping and handling indicator



CompaCLN SeaPack

Sea transport packaging surcharge CC

- Special packaging if machine travels by sea to prevent climate damage



PHYTO_CERTIFICATE

Phytosanitary Certificate of Heat-Treated Wooden Box

- Certificate that the wooden box meets specified import phytosanitary requirements





PBT Works s.r.o.

Lesní 2331, 756 61 Rožnov pod Radhoštěm

Czech Republic

info@pbt-works.com

+420 572 153 111

www.pbt-works.com