

Flexible Illuminators

for EVO Cam II

An accessory to extend the lighting options of the highly popular EVO Cam II digital microscope.

The flexible illuminators provide an ideal lighting solution for a range of otherwise difficult subjects and offers ultimate flexibility.

Large area reflective subjects are illuminated clearly in their entirety. Shadows and contrast can be controlled to enhance view and enable easier inspection and viewing.

The flexible illuminators attach directly to the underside of EVO Cam II and connect via USB cable.

Key Benefits:

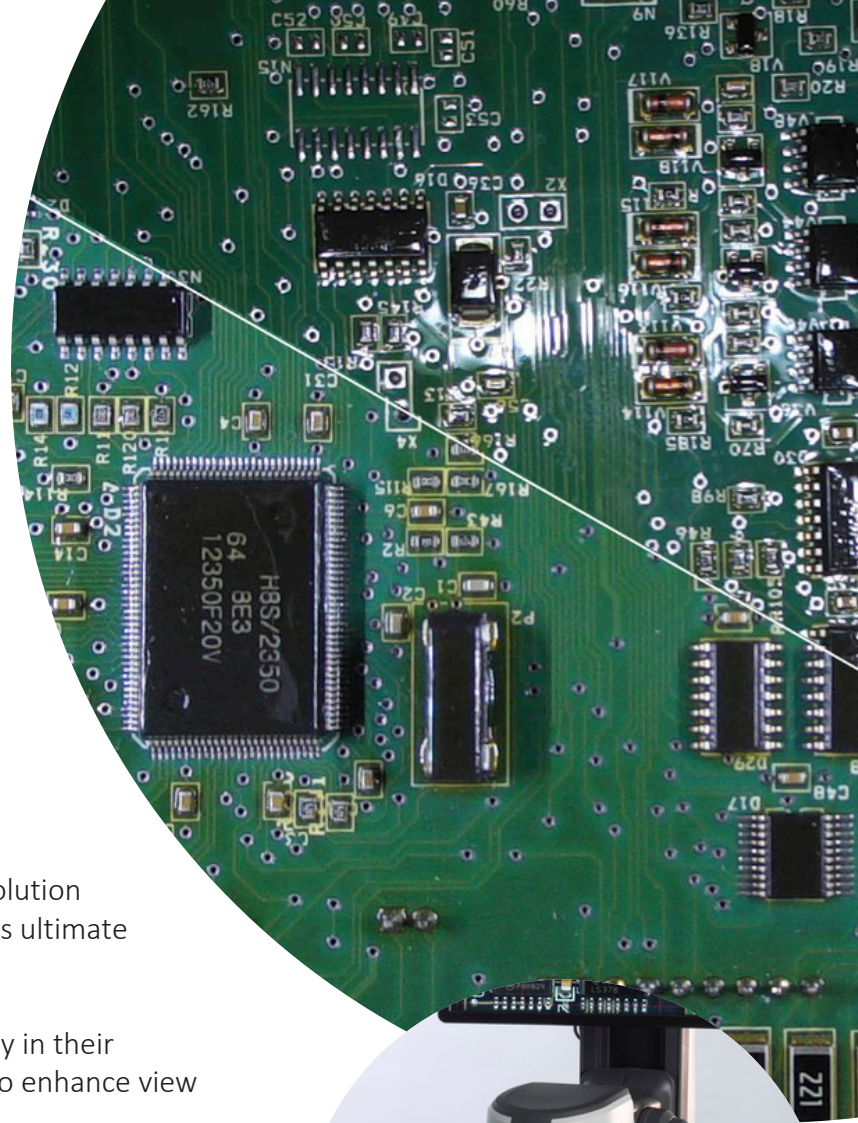
Clear workspace - Twin flexible bar-lights which mount directly on the camera keeping workstations clear and moving with the camera.

Independently controllable - Each bar light can be positioned and adjusted individually with its own on/off switch.

Optimised lighting conditions - Allows the user to control the effects of lighting on reflections and shadows specific to the subject.

Detecting fine details - Low level positioning of the illuminators aids detection of debris and surface contamination.

Compatibility	EVO Cam II
Stands	Ergo, Multi-axis, Single arm boom, Double arm boom



Vision Engineering Ltd.
The Freeman Building,
Galileo Drive, Send,
Surrey, GU23 7ER, UK
+44 (0) 1483 248300
generalinfo@visioneng.com

Episcopic Illumination Accessory

for EVO Cam II

The 'EPI illuminator' is specifically designed to simplify inspection of bores, pipes, tubes, slots, and holes with the highly popular EVO Cam II.

Getting light into and out of a narrow, dark feature in order to inspect the sides or bottom is often a problem. Conventional solutions cannot penetrate a 'dead zone' caused by conventional viewing angles.

The episcopic illuminator provides through-the-lens illumination for the inspection of boreholes and complex features, aided by precise iris and pivot/angle positioning for accurate lighting control.

Key Benefits:

Illuminate blind holes to their base - by enabling subject illumination along the optical axis.

Overcome issues with some highly reflective subjects - by reducing flare or shine from other surfaces which can effect optical resolution.

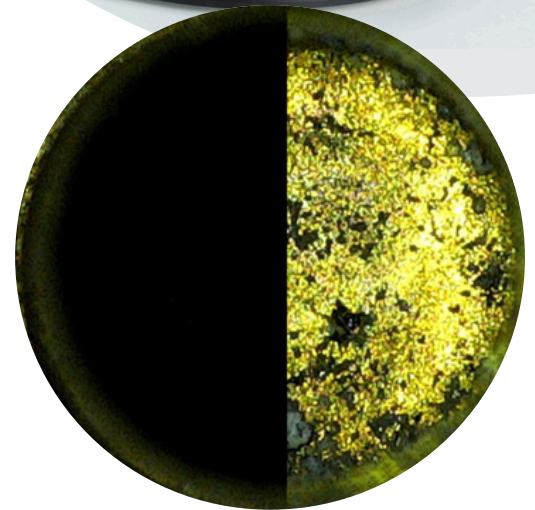
Control area of illumination with adjustable diaphragm

Control angle of illumination with pivot mounting point

Swing in / swing out design - simply move the EPI illuminator out of the field of view when not required.

Compatibility:

Camera	EVO Cam II
Objectives	0.45x, 0.62x, 1.0x



Above: bore hole with and without EPI illumination

Vision Engineering Ltd.
The Freeman Building,
Galileo Drive, Send,
Surrey, GU23 7ER, UK
+44 (0) 1483 248300
generalinfo@visioneng.com

Mini-Monitor Mounts

for EVO Cam II & Lynx EVO

Two new accessories for mounting small monitors directly to the EVO Cam II digital microscope and Lynx EVO eyepiece-less stereo microscope.

The new monitor mounts work with Ergo and Multi-axis stands and enable flexible positioning of the monitor.

Key Benefits:

Small footprint workstation – The monitor fits neatly onto the stand, ensuring the users workspace remains compact and tidy. As the monitor is positioned closer to the user there is no need for a larger screen to see the same level of detail.

Comfortable working – The in-line position of the monitor enables a user to look straight ahead when operating the equipment. This eliminates the users’ need to twist their body whilst working.

Flexible – Monitor height and angle can easily be adjusted as required (without the need to adjust the stand). For larger subjects, using the Multi-axis stand, the monitor will move with the camera when changing the height or position of the stand. When used with Lynx EVO and SmartCam 5 can be used as a training tool or to allow supervisor view without disturbing the operator or requiring extra bench space.

Compatibility:

Camera	EVO Cam II and Lynx EVO/SmartCam5
Objectives	All
Stands	Ergo and Multi-axis

The mounts are compatible with a wide range of 10” and 12” monitors. (Monitors should have VESA 75 x 75 mounting plate hole pattern and weight not exceeding 460g is recommended)



Vision Engineering Ltd.
The Freeman Building,
Galileo Drive, Send,
Surrey, GU23 7ER, UK
+44 (0) 1483 248300
generalinfo@visioneng.com