

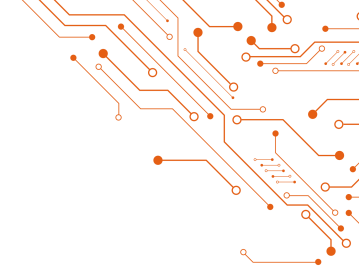


# MiniSWASH II

## Config Guide

Updated March 2025

Plan 38



ROTATING  
SPRAY



ROTATING AIR  
KNIFE DRYER



WATER  
REGENERATION



TRACEABILITY



RINSE  
CONTROL



Single chamber Spray-In-Air technology

Budget stencil cleaning

Stand-alone system for smaller producers



STENCILS



SQUEEGEES



MISPRINTS

## Features

- Automatic zero drain system
- 3-step process Wash, Rinse, Drying
- Rotary direct spray cleaning
- Rapid drying by heated air knife
- Closed loop eco drain system
- Framed stencils fit directly into the chamber
- Control software language mutations

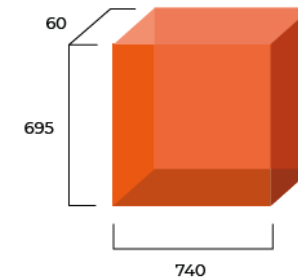
## Applications

- Removing solder paste from any type of stencils, screens and printer squeegees
- Removing SMT Glue residues from any type of stencils, screens, squeegees or PumpPrint stencils
- Cleaning second side misprints on complex assemblies

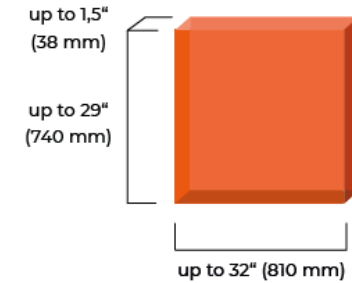
## Parameters

	MiniSWASH II open loop rinse	MiniSWASH II closed loop rinse
Machine dimensions WxLxH	1 600 x 800 x 1 200 mm <i>(height with ventilator or signal tower 1 800 mm)</i>	1 600 x 1 400 x 1 200 mm <i>(height with ventilator or signal tower 1 800 mm)</i>
Machine weight (without liquid)	250 kg	350 kg
Power supply	3x 400/230V 50-60Hz or 3x 208/120V 60Hz	

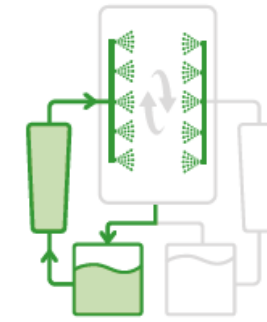
	MECHANICAL FILTERS				
	Wash	1 <sup>st</sup> Rinse	DI water cart		
MiniSWASH II (Open loop)	1pc	5 µm 20" length	1pc	1 µm 20" length	
MiniSWASH II (Closed loop)	1pc	5 µm 20" length	1pc	1 µm 20" length	1pc



Standard clamping usable space



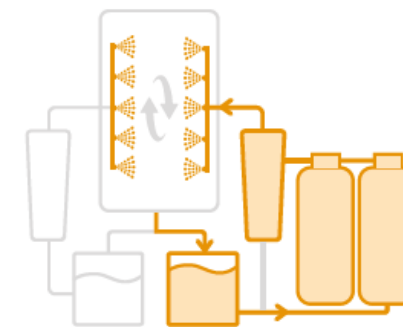
Framed stencils usable space



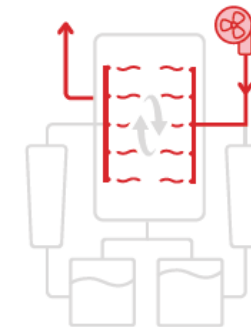
Wash



Semi-open loop rinse



Closed loop rinse



Drying

## Base

### **CBB-00000001-X**

**MiniSWASH II 230/400V 50Hz Wash + Rinse + Drying**

### **CBB-00000002-X**

**MiniSWASH II 230/400V 60Hz Wash + Rinse + Drying**

### **CBB-00000003-X**

**MiniSWASH II 120/208V 60Hz Wash + Rinse + Drying**

- Spray-In-Air cleaning machine
- Heating of wash tank up to 60°C
- Heating of rinse tank up to 40 °C
- Air-knife drying system with heating up to 90°C
- PLC control system, touchscreen
- Electric switchboard and wiring
- Liquid system – pumps, piping, filtration
- Wash and rinse tanks
- Spray arm and air-knife crash detection sensors
- Central stop button
- Easy to open and lock door mechanism
- Built-in parallelogram as framed stencil clamping



## Exhaust system

### CBS-00000001-X

#### Exhaust sensors

- Sensors detect insufficient extraction and are connected to the safety PLC
- For customers with adequate central extraction system:
  - Flowrate: 150–200 m<sup>3</sup>/h
  - Under-pressure: 50–80 Pa
  - Connection: hose ø100 mm

### CBS-00000002-X

#### Exhaust fan 230V, 50Hz/60Hz

### CBS-00000003-X

#### Exhaust fan 120V, 60Hz

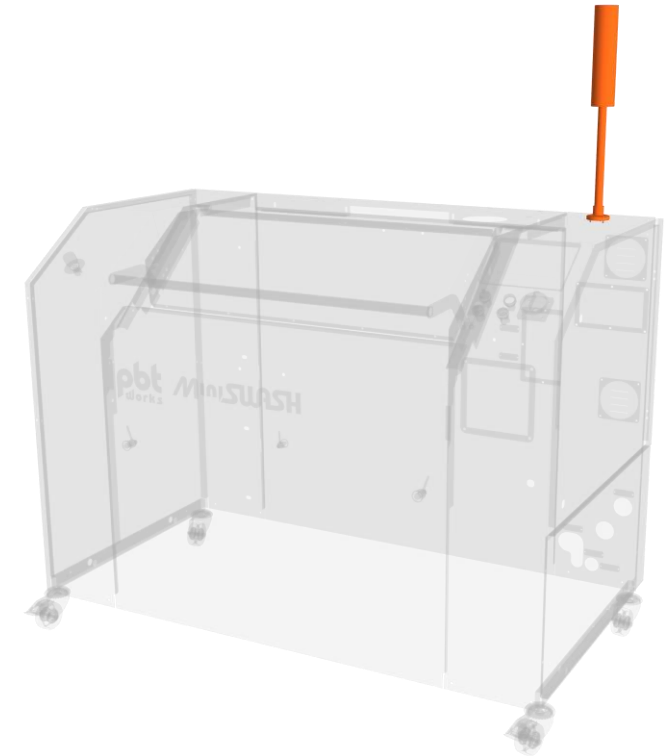
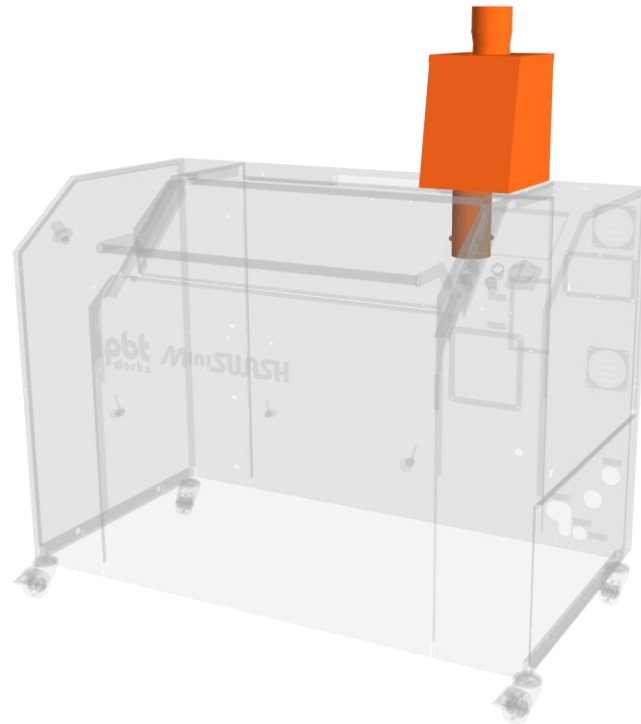
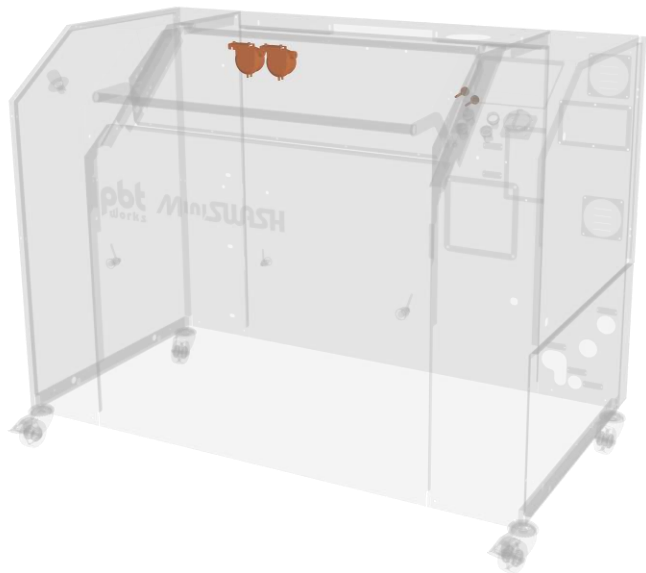
- Connection: hose ø100 mm
- For customers without central extraction system

## Signal tower

### CBS-00000004-X

#### Signal tower

- Audio and visual effects to signal individual processes
- Standard green/blue/red signalization



## Traceability

### CBO-00000001-X

#### Traceability XML ONLINE prep kit

- Preparation kit for later retrofitting of XML Traceability
- This optional item is to be ordered with the machine, for future installation of traceability

### CBO-00000002-X

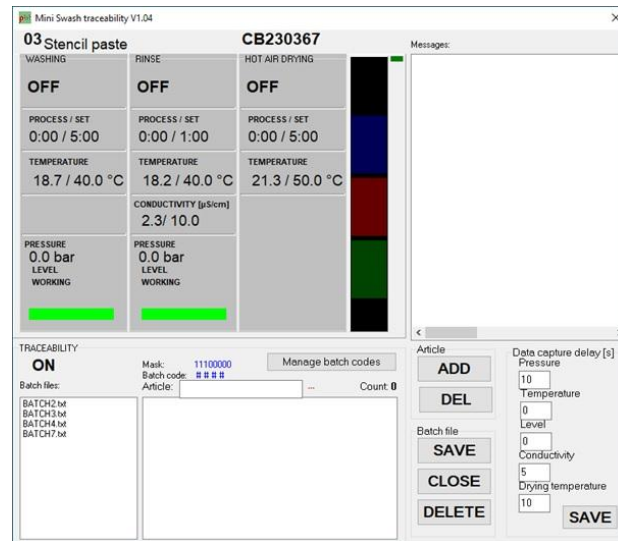
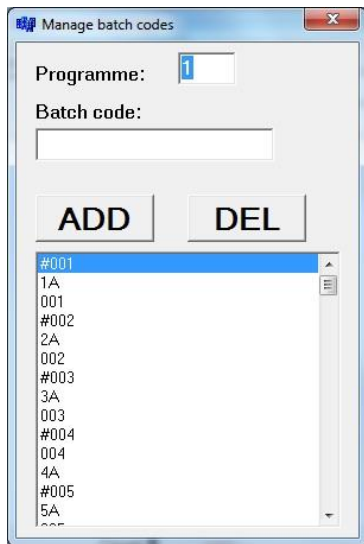
#### Traceability XML ONLINE

- Machine can be connected to LAN (Internet) without any restrictions
- (Win updates, driver updates etc.)
- Machine control PLC is safely separated from the Internet connection
- The barcode reader can read barcodes, data matrices and QR codes
- Traceability files are stored on Traceability PC in XML format
- XML files are machine processable

### CBO-00000003-X

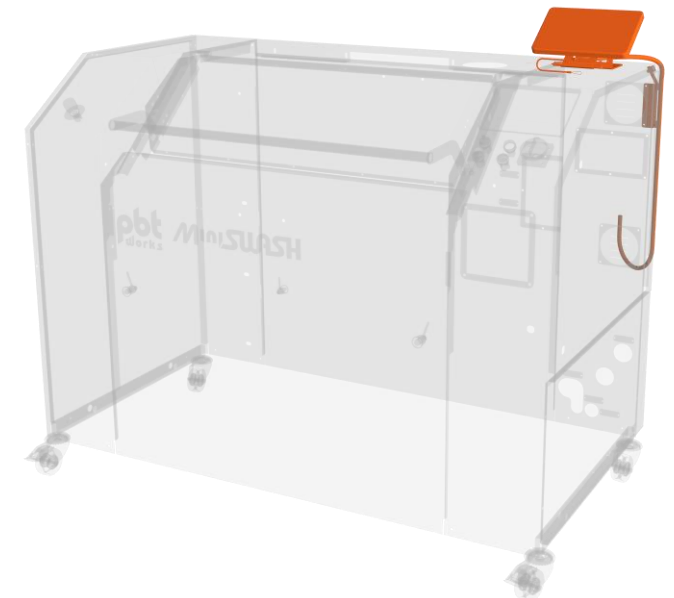
#### Additional display for traceability

- Extra 10" LCD touchscreen display for better control of traceability files in the machine
- Can be placed on machine surface



```

<Wash>
<Pressure>
<Typ>Psi</Typ>
<Divisor>10</Divisor>
<Min>420</Min>
<Max>420</Max>
<Average>420</Average>
<Start>420</Start>
<End>420</End>
</Pressure>
<Temperature>
<Typ>°F</Typ>
<Divisor>10</Divisor>
<Min>950</Min>
<Max>950</Max>
<Average>950</Average>
<Start>950</Start>
<End>950</End>
</Temperature>
<Level>
<Typ>string</Typ>
<Min>LOW</Min>
<Max>WORKING</Max>
<Start>WORKING</Start>
<End>WORKING</End>
</Level>
</Wash>
    
```



## Rinse

**CBO-00000005-X**

**Closed loop rinse with DI water regeneration incl. conductometer  
(Carbon, Mixed medium size vessels)**

- External filtration cart with 1pc medium mixbed and 1pc activated carbon vessels
- Mechanical filter (1 µm 20")
- Conductometer for continual monitoring of rinse water conductivity

**CBO-00000006-X**

**Open loop rinse w/o regeneration**

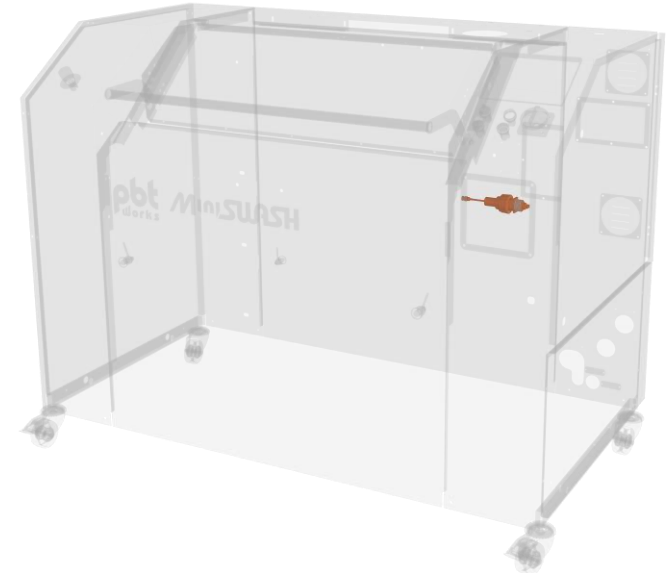
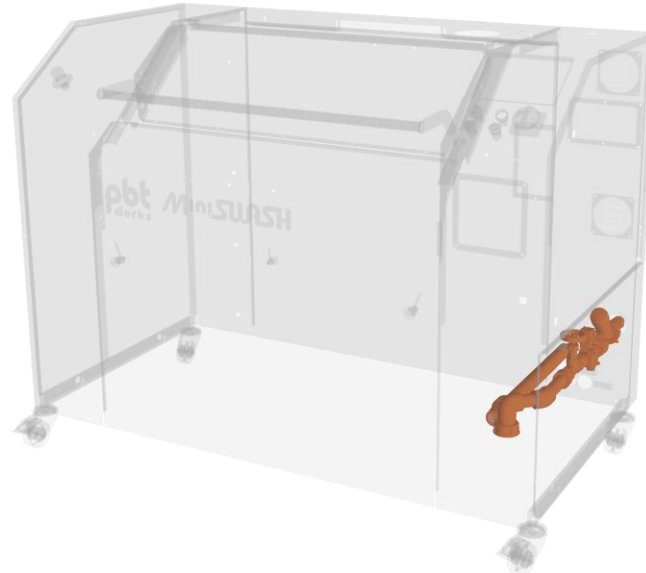
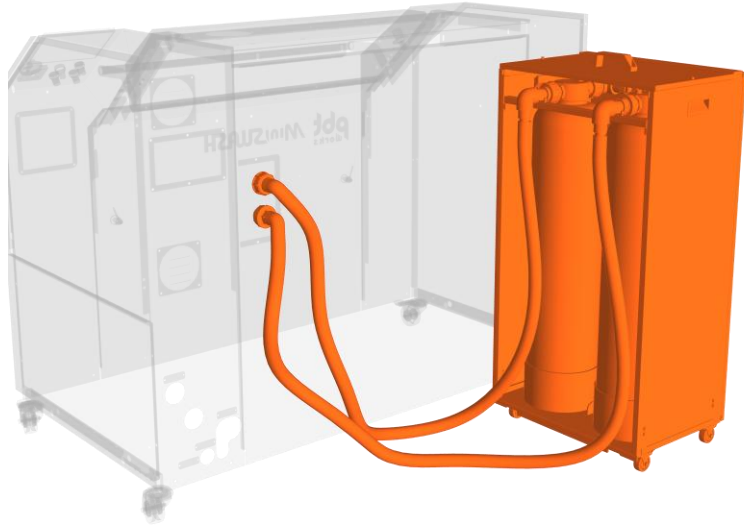
- Automatic refilling of fresh water in rinse cycle
- Controlled input of tap/DI water
- Rinse tank overflow to drainage

## Conductometer

**CBO-00000007-X**

**Conductometer for open loop w/o regeneration**

- Continual monitoring of rinse water conductivity
- For rinse loop with external DI water source

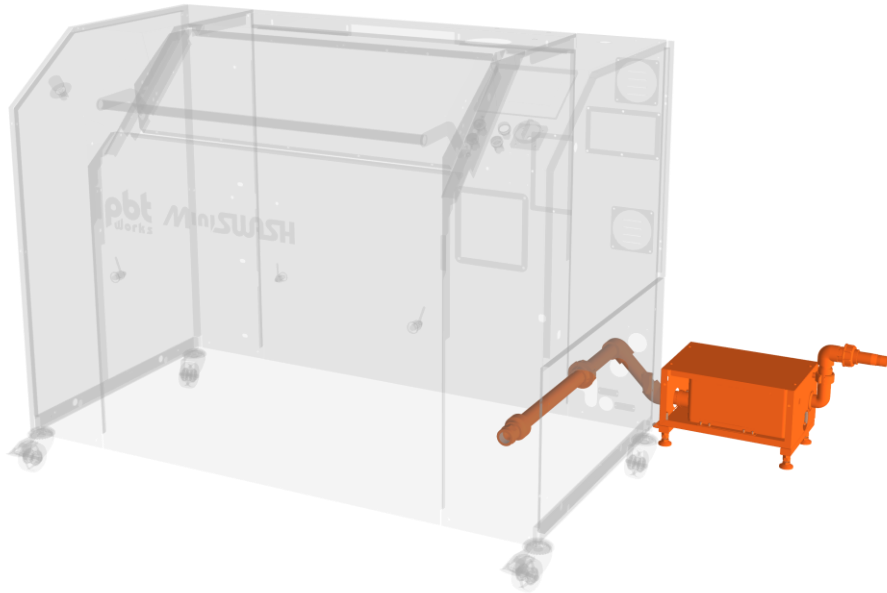


## Drain pump

**CBO-00000008-X**

### Drain pump for open loop rinse

- For easy draining of waste-water from rinse tank into drainage
- Recommended for open loop rinse with distant drainage
- Max pump capacity is 30 l/min

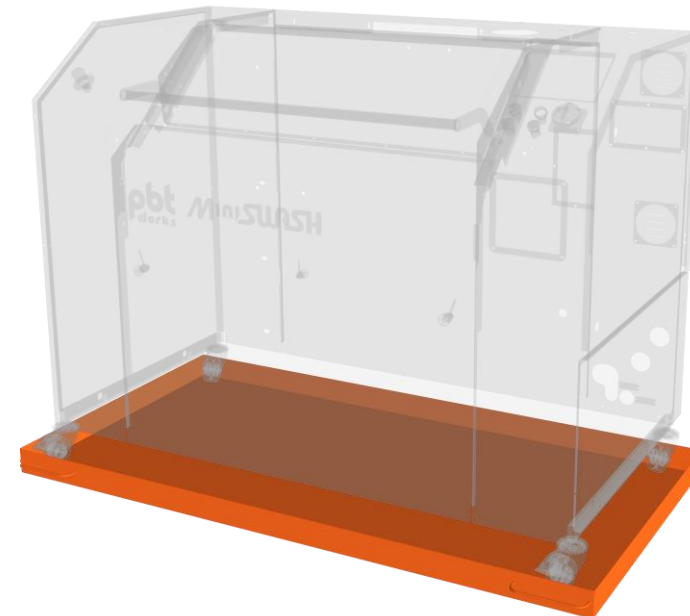


## Spillage tray

**CBO-00000009-X**

### Spillage tray with leakage detection sensor

- Metal tray under the machine to hold possible leakage
- Sensor which indicates leakage from machine/tanks/pipes incl. acoustic signal
- Dimensions 1618 x 838 x 70 mm, capacity up to 95L of liquid

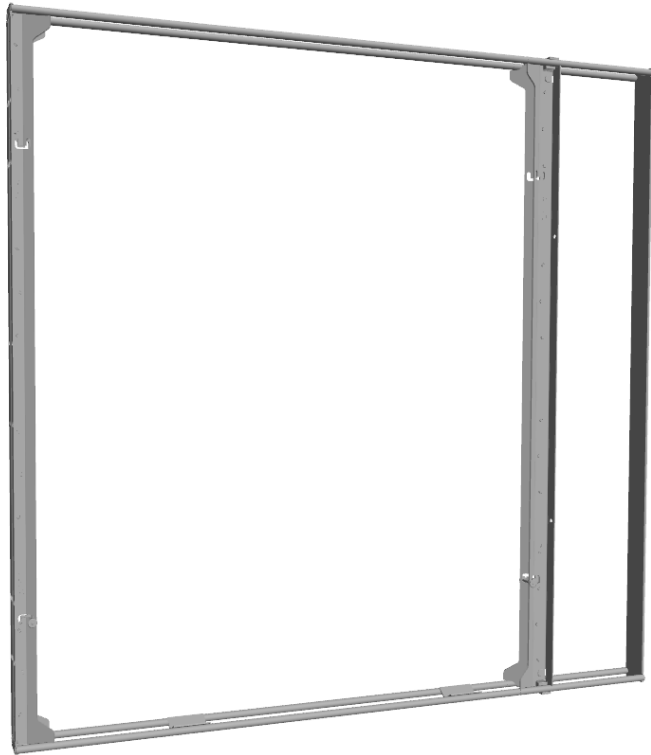


## Stencil clamping

### CLP-00000017-X

VectorGuard & Zelflex stencil holder, adjustable for all types-directly into SINGLE/TWINGO, MiSW

- DEK VectorGuard stencil and Zelflex Protect stencil can be easily inserted into the holder
- Suitable for size 23x23", 23x29", 29x29"



### CLP-00000019-X

Stencil sheet holder w/o basic frame (SINGLE/TWINGO, MiSW) - MUST SPECIFY sheet type

- Necessary to specify type of stencil sheet (Gerber data)
- Max. stencil sheet size 740 x 633 mm
- Fits into Basic frame SINGLE or TWINGO (basic frame not included!)

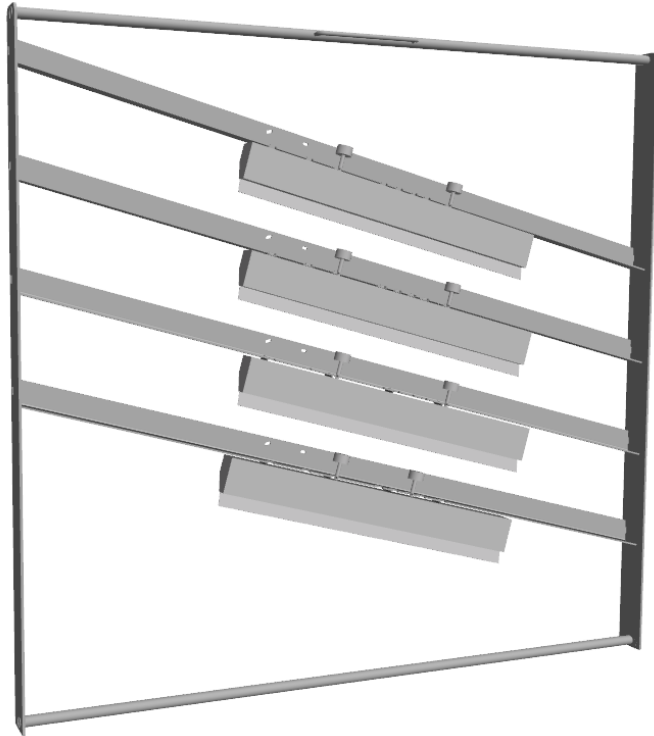


## Squeegee clamping

### CLP-0000020-X

Holder for 4 squeegees: DEK 152, 115; MPM 100, 146; SAMSUNG 140, 160, Juki 100, 127-into SuSW S/T, MiSW

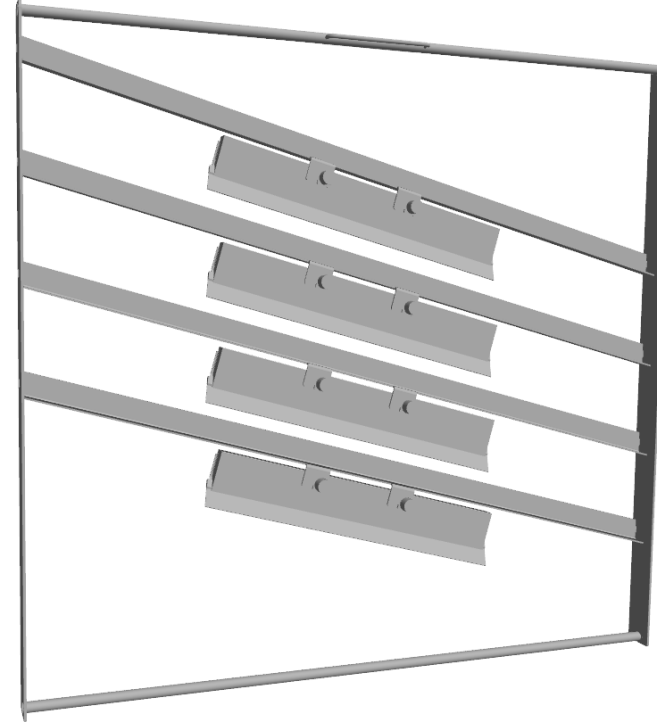
- Fits directly into machine chamber



### CLP-0000021-X

Holder for 4 squeegees SAMSUNG (front screw 110-170) - directly into SuSW S/T, MiSW

- Fits directly into machine chamber

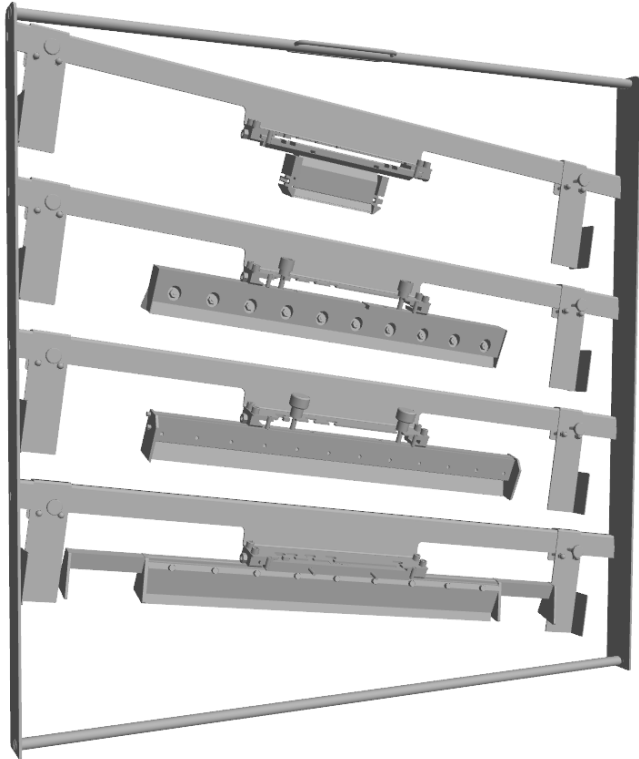


## Squeegee clamping

**CLP-0000022-X**

Holder for 4 squeegees EKRA - directly into SuSW S/T, MiSW (bolt/click-on system)

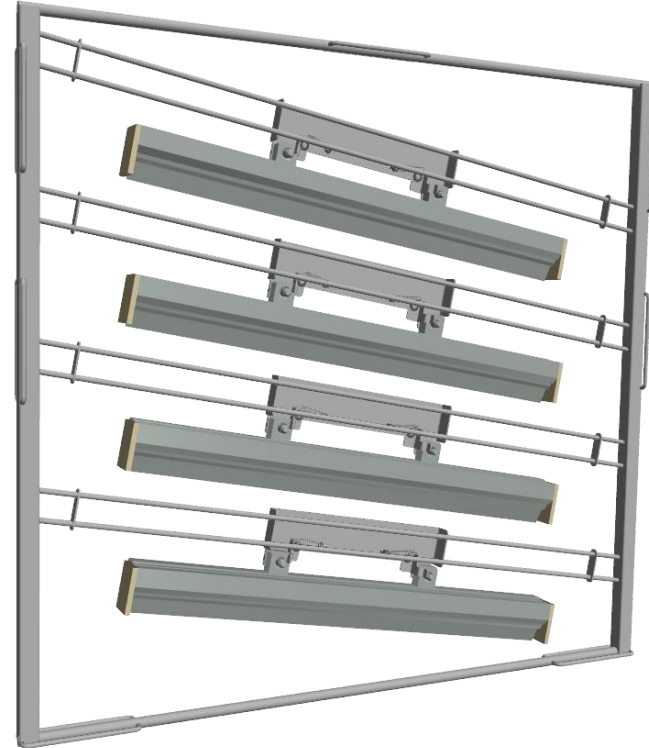
- Fits directly into machine chamber



**CLP-0000023-X**

Holder for 4 squeegees PANASONIC - directly into SuSW S/T, MiSW (through hole mounting)

- Fits directly into machine chamber

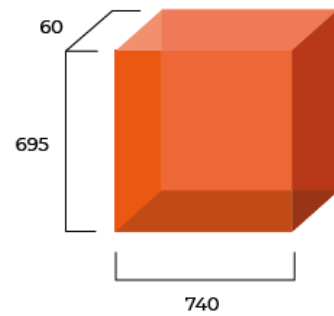
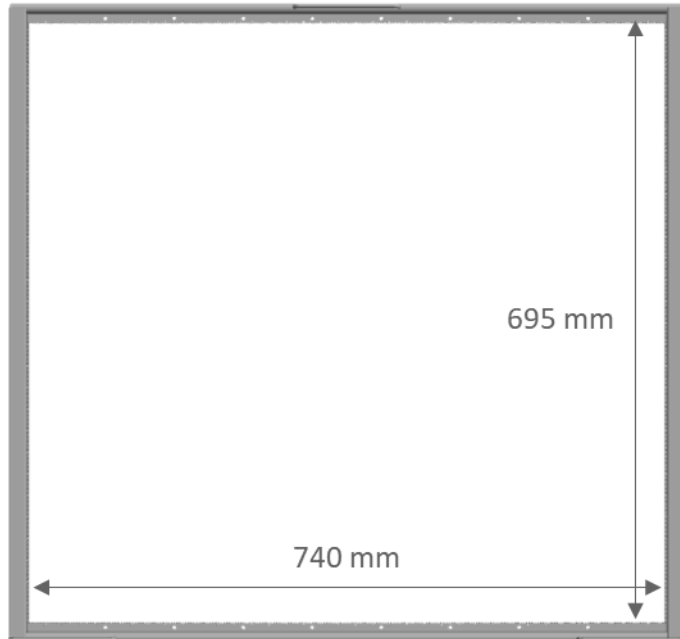


## Clamping

CLP-00000005-X

Basic frame TWINGO, MiSW (usable 740x695 mm)

- Basic frame for clamping



Standard clamping usable space

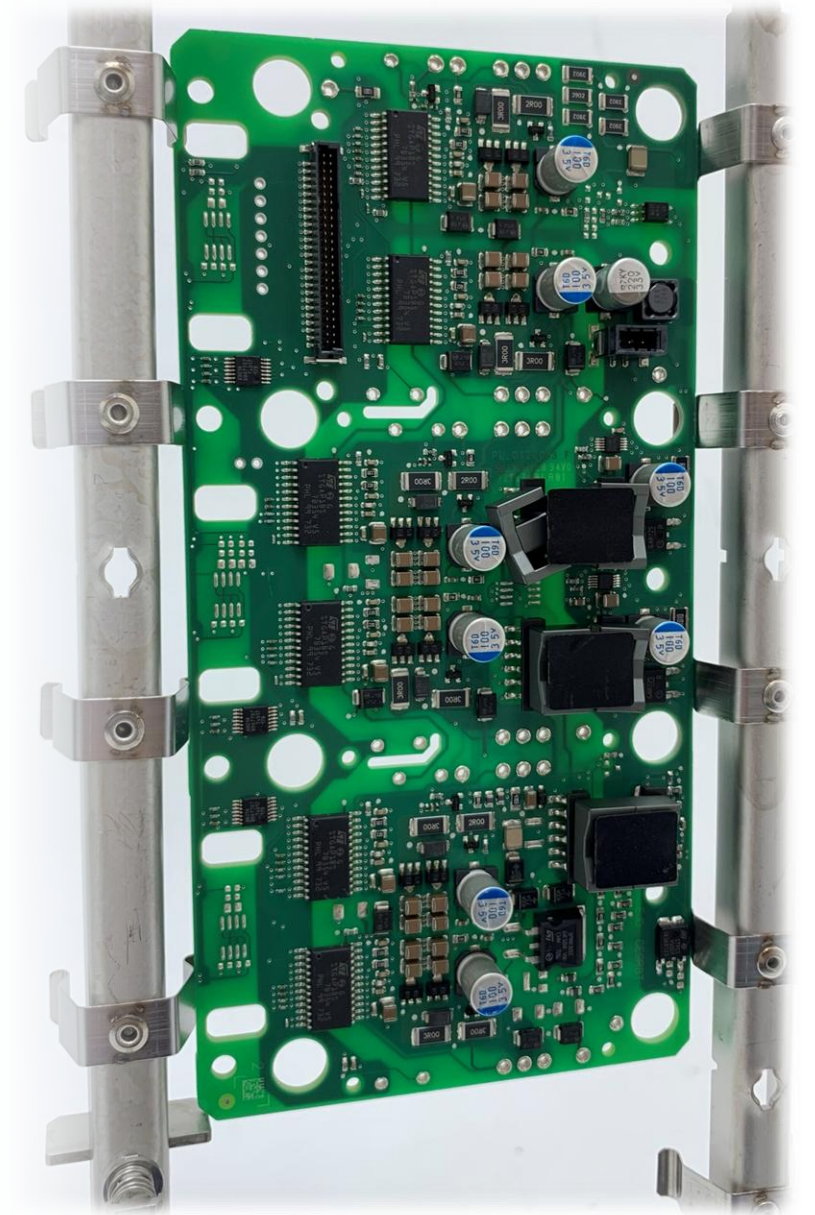
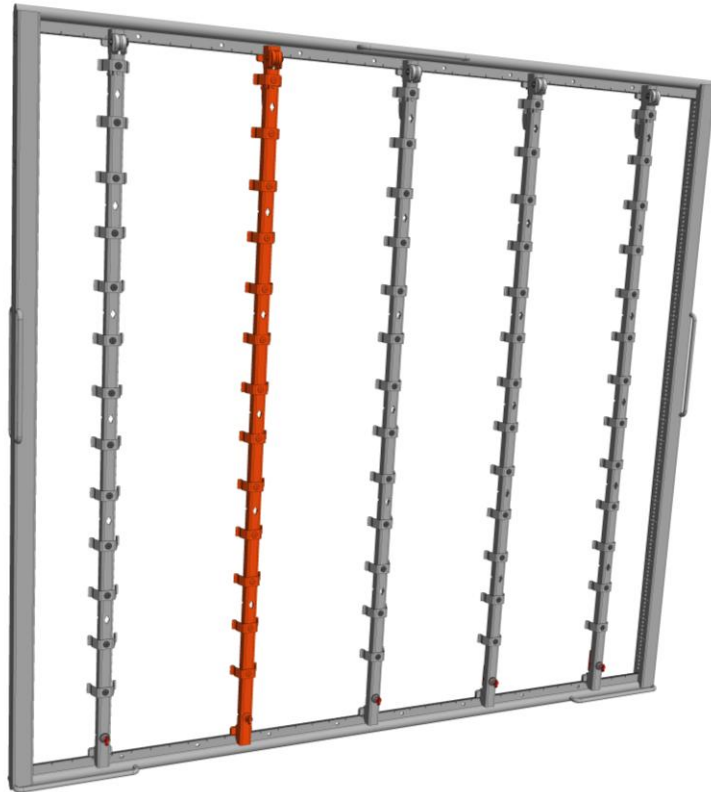


## Clamping

CLP-00000006-X

Spring fingers bar for PCB (vertical, pitch 50mm) into basic frame TWINGO, MiSW, HySW

- Adjustable vertical bar with metal fingers

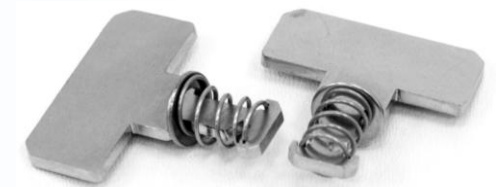
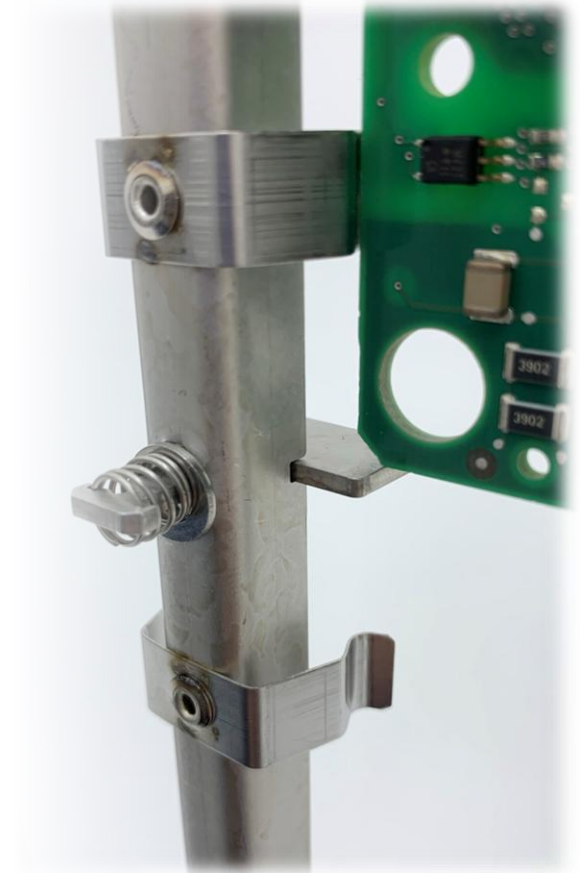
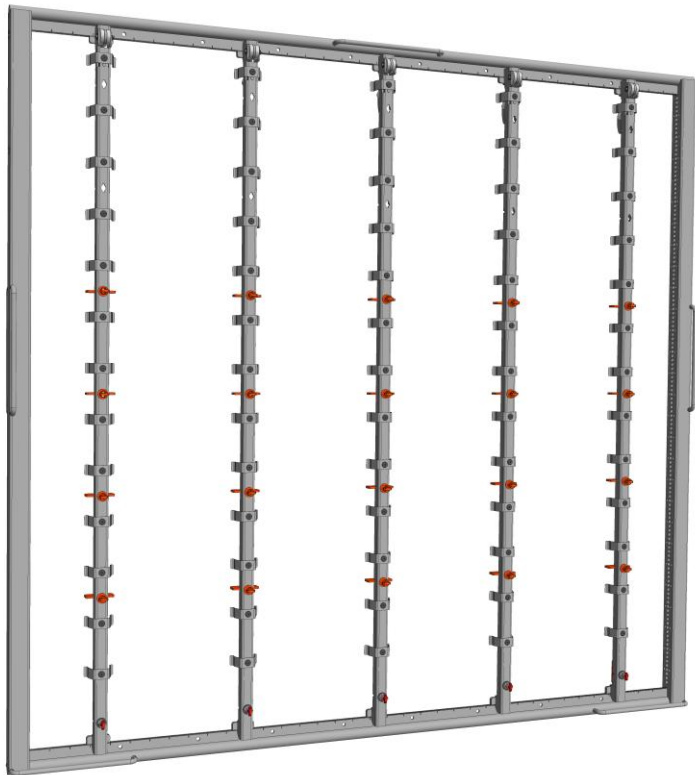


## Clamping

CLP-00000007-X

Supporting pin for heavy board (for vertical bar with spring fingers only)

- This pin holds PCB from sliding down
- To be used with CLP-00000006-X Spring fingers bar only

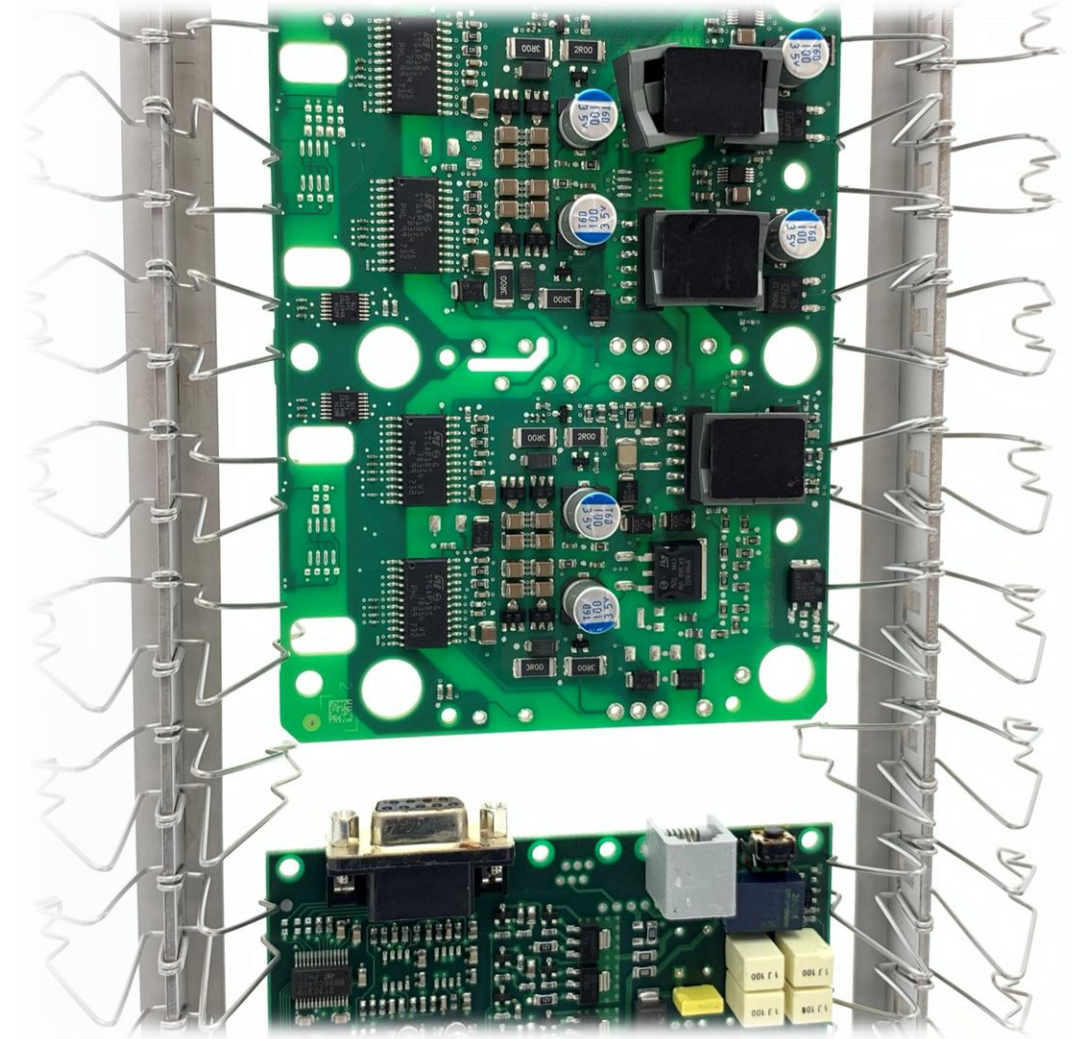
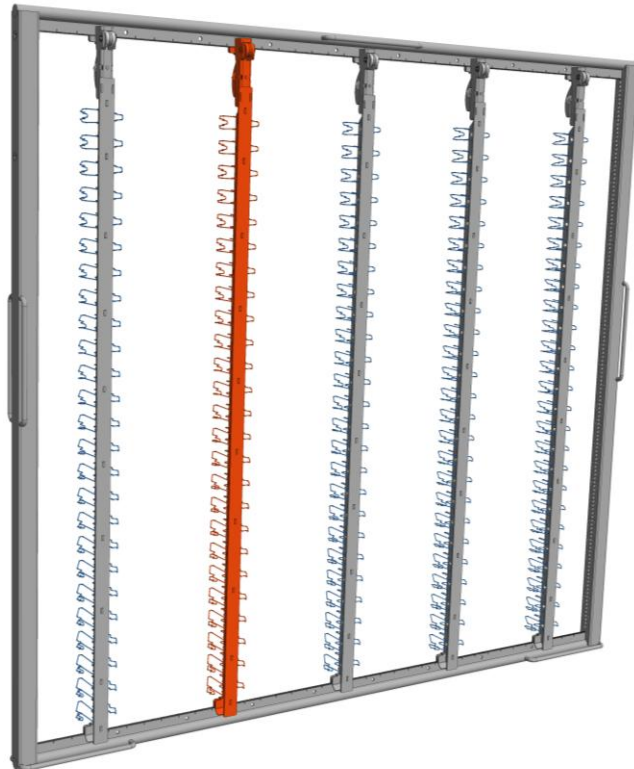


## Clamping

CLP-0000008-X

Spring wires bar for PCB (vertical, pitch 25mm) into basic frame TWINGO, MISW, HySW

- Adjustable vertical bar with 50 spring wires

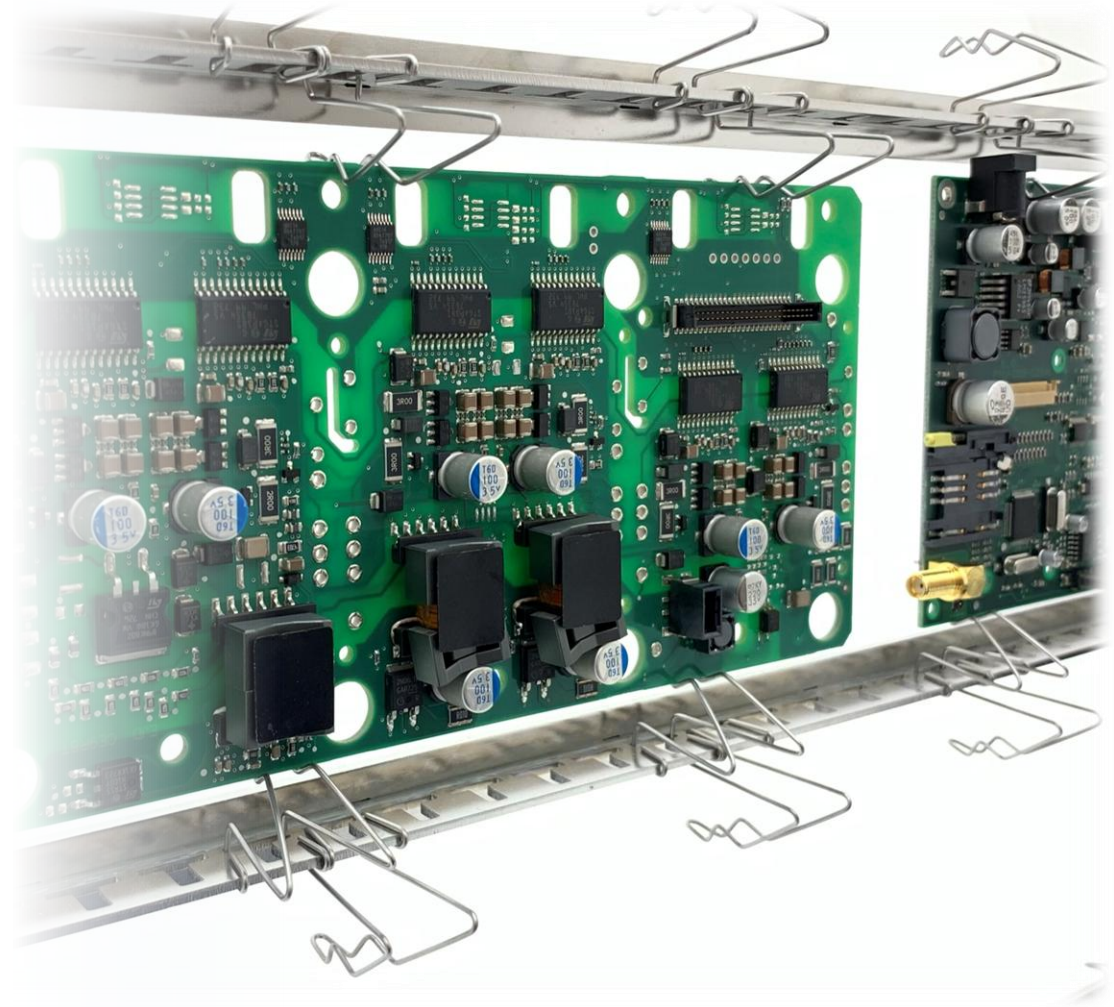
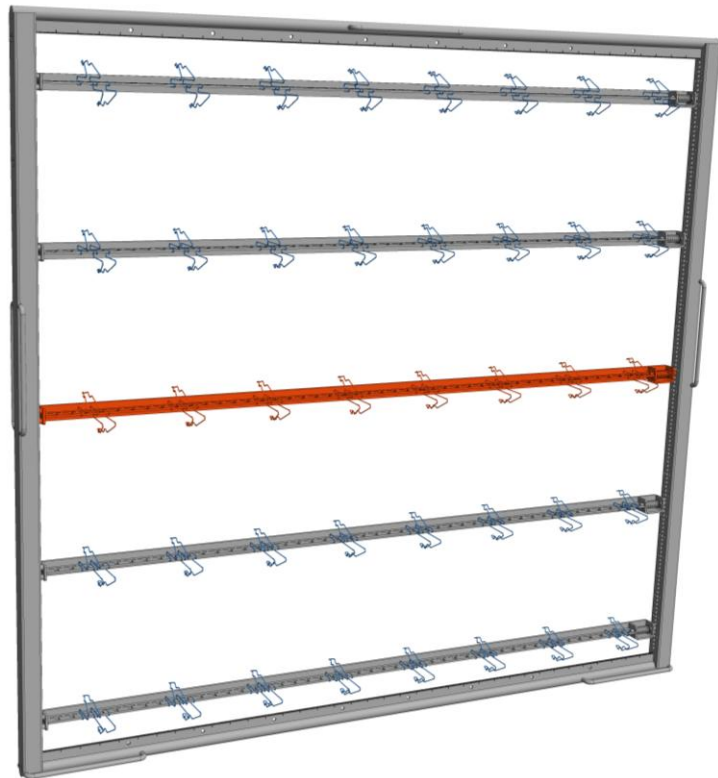


## Clamping

CLP-00000009-X

Spring wires bar for PCB (horizontal, T-profile) into basic frame SINGLE/TWINGO, MiSW, HySW

- Adjustable horizontal bar with 16 spring wires



## Clamping

### CLP-00000010-X

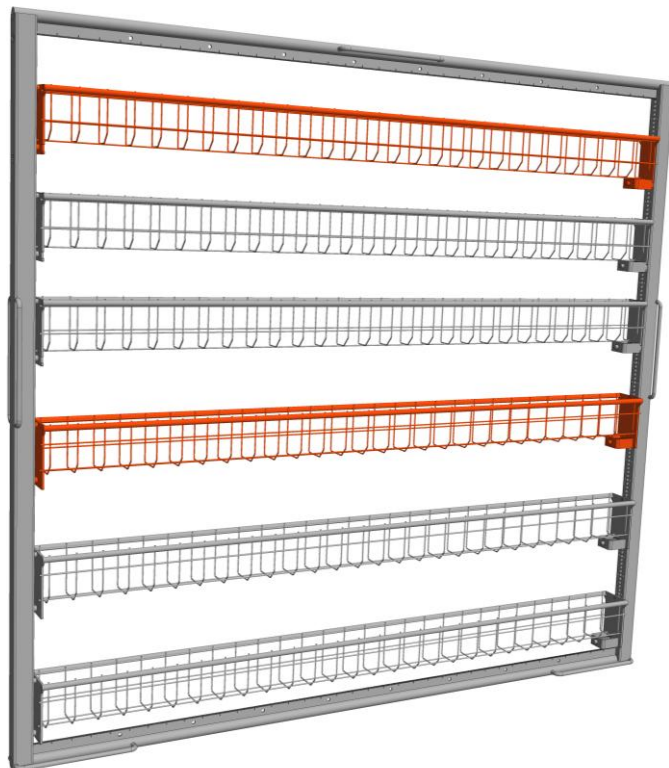
Wire basket 24x727x50 (WxLxH usable dim.) into basic frame SINGLE/TWINGO, MiSW, HySW

- Basket usable dimensions 24 x 727 x 50 mm
- 6 pcs/frame

### CLP-00000013-X

Wire basket 34x727x50 (WxLxH usable dim.) into basic frame SINGLE/TWINGO, MiSW, HySW

- Basket usable dimensions 34 x 727 x 50 mm
- 6 pcs/frame



## Clamping

### CLP-00000011-X

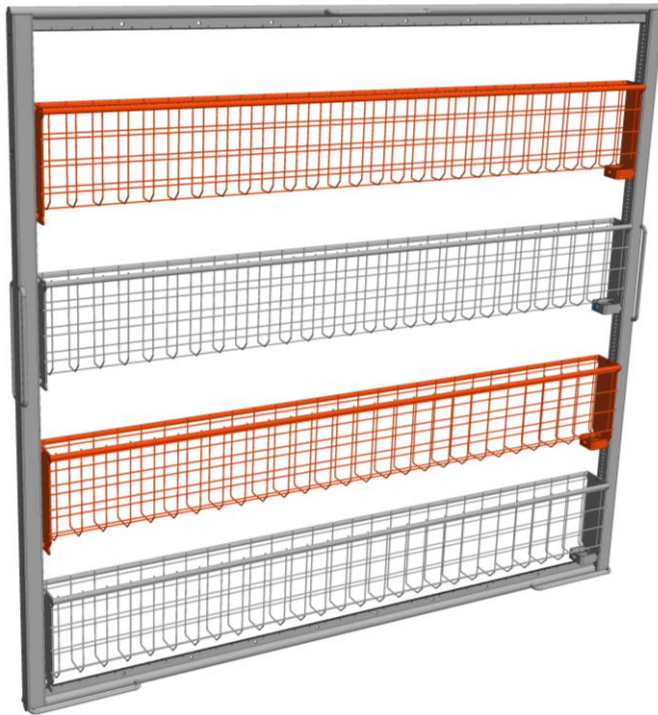
Wire basket 24x727x100 (WxLxH usable dim.) into basic frame SINGLE/TWINGO, MiSW, HySW

- Basket usable dimensions 24 x 727 x 100 mm
- 4 pcs/frame

### CLP-00000014-X

Wire basket 34x727x100 (WxLxH usable dim.) into basic frame SINGLE/TWINGO, MiSW, HySW

- Basket usable dimensions 34 x 727 x 100 mm
- 4 pcs/frame



## Clamping

### CLP-00000012-X

Wire basket 24x727x170 (WxLxH usable dim.) into basic frame SINGLE/TWINGO, MiSW, HySW

- Basket usable dimensions 24 x 727 x 170 mm
- 2 pcs/frame

### CLP-00000015-X

Wire basket 34x727x170 (WxLxH usable dim.) into basic frame SINGLE/TWINGO, MiSW, HySW

- Basket usable dimensions 34 x 727 x 170 mm
- 2 pcs/frame



## Packing

**PKG-00000010-X**

**Transport wooden box incl. packing cost (MiSW) 1386 x 2300 x 1468 mm**

- Standard wooden box for machine
- Including HT (heat treatment)
- Including Shockwatch shipping and handling indicator



**MiSW SeaPack**

**Sea transport packaging surcharge MiSW**

- Special packaging if machine travels by sea to prevent climate damage



**PHYTO\_CERTIFICATE**

**Phytosanitary certificate of heat-treated wooden box**

- Certificate that the wooden box meets specified import phytosanitary requirements



## Spare parts packages

**SPP-00000004-X**

**Spare parts package MiSW L1**

- Consumables – set of selected sealings, o-rings, filters, mechanical filters
- Material usually used for regular maintenance



**SPP-00000005-X**

**Spare parts package MiSW L2,3 50Hz**

**SPP-00000006-X**

**Spare parts package MiSW L2,3 60Hz**

- Complex assemblies – sensors, pumps, motors, heating elements, power switches, valves, jets, chain
- For easy to challenging service





**PBT Works s.r.o.**

Lesní 2331, 756 61 Rožnov pod Radhoštěm

Czech Republic

[info@pbt-works.com](mailto:info@pbt-works.com)

+420 572 153 111

[www.pbt-works.com](http://www.pbt-works.com)