

Vision
ENGINEERING
TVM 35

QUALITY

FOCUSED

TVM
The rapid measurement
system

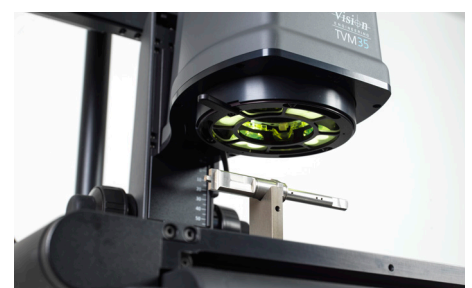
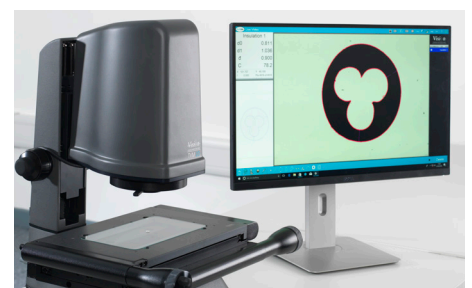


Simply measure. Any shape.

A new class of measuring system from Vision Engineering. TVM20 and TVM35 mark the beginning of a new era for fast and flexible shop floor measurement. From the combination of advanced optical design and simple yet powerful software, comes a competent metrology system that can measure components of any shape.

User benefits:

- Measure entire components in seconds
- Use as a simple digital profile projector or a complete video measurement system
- **Go, No Go** simplicity with full geometric tolerancing
- Measure components of any shape; flat, square or cylindrical
- Compact, space saving design
- Even faster measurements with **motorised** X-Y stage



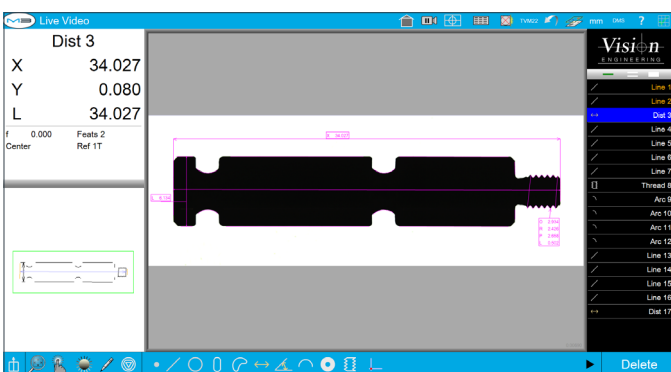
Ideal measurement system for a variety of applications including automotive, plastics, medical devices, precision engineering and electronics.



The TVM series utilises flat field telecentric optics and illumination to create a sharp image of the component on its HD monitor and improves the video edge detection capability on complex parts significantly. The availability of a moving stage makes it possible to measure components larger than the field of view.



The TVM series come with the renowned M3 measurement software with a rich suite of features as well as simple data import/export and reporting facilities.



Measurements from stitched image

- Place and measure functionality
- Minimum training required
- Eliminates operator errors with instant measurement within the field of view
- Clearly see the video image and part view on a large HD monitor
- Tolerance reports and other essential data outputs
- Modular software can be upgraded to enhance measurement capabilities

		TVM20	TVM35
Measuring range (X,Y):	FOV Mode	18 mm x 14 mm (20 mm diagonal)	28 mm x 21 mm (35 mm diagonal)
	With moving stage	200 mm x 100 mm	200 mm x 100 mm
Maximum component height	With fixed stage	-	100 mm
	With moving stage	68 mm	68 mm
Moving stage (motorised or manual)		●	○
Measurement uncertainty	FOV mode	3µm	4µm
	With moving stage	5+(9.54L/1000)µm	5+(9.54L/1000)µm
Optics:		Telecentric lens	
Surface illumination:		Controllable and programmable LED illumination	
Substage illumination:		Controllable and programmable LED collimated illumination	
Image sensor		5MP USB 3.0 camera	
User interface		M series software in multiple languages	
Digital Comparator		●	●
Image stitching		●	●
Customisable report templates		●	●
Thread measurement		○	○
Wire insulation measurement		○	○
Data export		Multiple formats including .csv and .dxf	
Barcode scanner support		○	○
Weight	With fixed stage	-	10 kg
	With moving stage	22 kg	23 kg
Maximum Dimensions (w x d x h)	With fixed stage	-	275 x 375 x 605 mm
	With moving stage	515 x 480 x 605 mm	515 x 480 x 605 mm

- Available as standard
- Available as an option

Find out more at: www.visioneng.com/tvm »

All product specifications and data are subject to change without notice.

VISION ENGINEERING + OUR DIFFERENCE

Vision Engineering Ltd. has been designing and manufacturing high quality ergonomic microscopes, digital instruments, inspection and non-contact measuring systems for over 60 years.

Innovation

With a philosophy of design innovation, Vision Engineering holds world patents for a number of optical / digital techniques, significantly improving viewing ergonomics and enabling customer quality and productivity improvements.

To see our focused quality, please contact your Vision Engineering branch, local authorised distributor, or visit our website: visioneng.com

Quality

Vision Engineering prides itself on quality products, electronics, mechanics and optics and is certified for the quality management system ISO 9001:2015. Quality is as important to us as it is to our customers. Our systems have proved themselves many times over and are chosen by the world's leading companies.

Global

Vision Engineering has manufacturing and design facilities in the UK and USA, plus sales and support offices throughout Europe, the Americas, the Far East, and Asia. We support our customers with close technical and service support anywhere in the world.

Vision Engineering Ltd.
(UK Manufacturing & Commercial)
The Freeman Building, Galileo Drive, Send, Surrey, GU23 7ER, UK
T +44 (0) 1483 248300
E generalinfo@visioneng.co.uk

Vision Engineering Ltd. (Italia)
Via G. Paisiello 106
20092 Cinisello Balsamo MI, Italia
T +39 02 6129 3518
E info@visioneng.it

Vision Engineering (South East Asia)
P-03A-20, Impian Meridian, Jalan Subang 1, USJ 1, 47600 Subang Jaya, Selangor Darul Ehsan, Malaysia
T +604-619 2622
E info@visioneng.asia

Vision Engineering (Mexico)
T +01 800 099 5325
E info@visioneng.com

Vision Engineering Inc.
(NA Manufacturing & Commercial)
570 Danbury Road, New Milford, CT 06776, USA
T +1 (860) 355 3776
E info@visioneng.com

Vision Engineering Ltd. (France)
ZAC de la Tremblaie, Av. de la Tremblaie 91220 Le Plessis Paté, France
T +33 (0) 160 76 60 00
E info@visioneng.fr

Vision Engineering (China)
Room 904B, Building B, No.970, Nanning Road, Xuhui Vanke Center Shanghai, 200235, P.R. China
T +86 (0) 21 5036 7556
E info@visioneng.com.cn

Vision Engineering (Brazil)
E info@visioneng.com.br

Vision Engineering (Latin America)
E info@visioneng.com

Vision Engineering Ltd.
(Central Europe)
Anton-Pendele-Str. 3, 82275 Emmering, Deutschland
T +49 (0) 8141 40167-0
E info@visioneng.de

Nippon Vision Engineering (Japan)
272-2 Saedo-cho, Tsuduki-ku, Yokohama-shi, Kanagawa 224-0054, Japan
T +81 (45) 935 1117
E info@visioneng.jp

Vision Engineering (India)
T +91 (0) 80-5555-33-60
E info@visioneng.co.in



FM 557119

Vision Engineering Ltd. has been certified for the quality management system ISO 9001:2015.

