

PREMIUM FLEXIBLE MOUNTER

HM520W

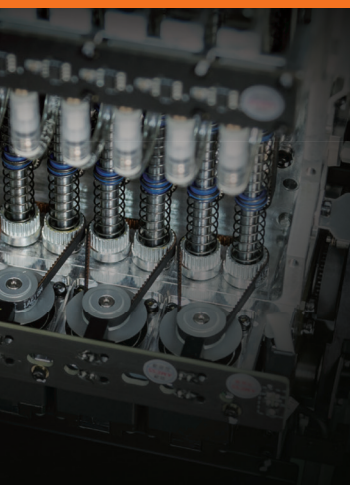


With its best-in-class performance, the HM520W is a premium wide high-speed chip mounter that offers an excellent productivity, placement quality, versatility and operational convenience.



Model Name		HM520W		
Head Type		HS(High Speed) Head	MF(Multi Function) Head	HP(High Precision) Head
The Number of Spindles		20 Spindle x 2 Gantry	8 Spindle x 2 Gantry	3 Spindle x 2 Gantry
Placement Speed (All head)		80,000CPH (Optimum)	52,000CPH (Optimum)	22,000CPH (Optimum)
Placement Accuracy	Chip	± 25µm @ Cpk ≥ 1.0	± 30µm @ Cpk ≥ 1.0	± 40µm @ Cpk ≥ 1.0
	IC	N/A	± 25µm @ Cpk ≥ 1.0	± 20µm @ Cpk ≥ 1.0
Component Range	Size	0201 ~ □6	0402 ~ 100 x 45 mm	0603 ~ 150 x 75 (*200x130mm)
	Max. Height	2.1mm	15mm	40mm
	Force (Max)	-	-	~ 100N
	weight	-	-	~ 300g
PCB Size (mm)	Min.	L50 x W40		
	Max.	Dual Work (4 Station)	L720 x W315 (Dual Mode), L720 x W590 (Single Mode) * L: 260(Buffer)-350(Work A)-350(Work B)-260(Buffer), Max. 720mm	
		Single work (2 Station)	L510 x W315 (Dual Mode), L510 x W590 (Single Mode) Max. L750mm (2 Clamp) * L: 460(Buffer)-510(Work)-290(Buffer)	
PCB Thickness (mm)		0.3~4.2		
Feeder Capacity	Cart	60 slot(Cart) x 2		
	Fix + Cart	(18 slot (Fix) + 40 slot (Cart)) x 2 * 40 slot (cart) ↔ Direct Tray		
Utility	Power	3 Phase AC 200/208/220/240/380/415V ± 10%		
		Max. 4.5 kVA		
	Air Consumption	0.5~0.7Mpa 100 NI/min		
External Dimension (mm)		L1,390 x D2,370 x H1,980		

※ The specification in this catalog is based on value measured at an optimized condition. The result may vary depending on the operating condition.



Enhanced In-Line Productivity with HM520W Series

High-Speed Moulder HM520W with optimum heads (HS, MF, HP) in-line will provide an enhanced productivity. HS (High-Speed) head with faster chip shooting speed, MF (Multi-Function) head with the wide coverage for mixed components, and HP (High Proficient) head with optimized support on odd-form components.

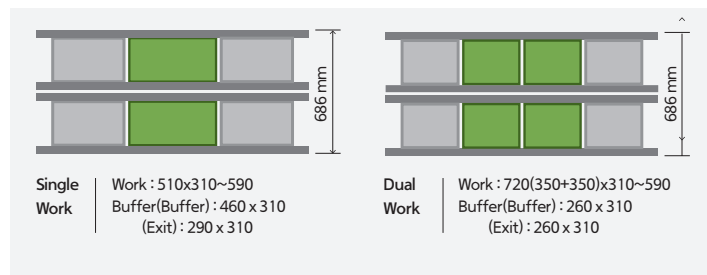


Best-in-Class Placement Accuracy IC ± 20µm @ CPK ≥ 1.0

The HM520W achieves a high placement accuracy of ± 20µm for ICs and ± 25µm for chips. The Run-Time Calibration ensures placement accuracy. In addition, it is possible to achieve a high quality in placement with the Flow Monitoring and Nozzle Check by preventing defect.

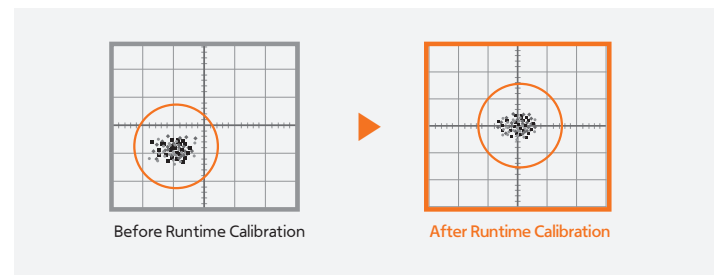
PCB Transfer Time Reduced by 47%

The PCB transfer distance has been reduced by adding a buffer, and the loading time can be significantly reduced with a quick detection and transfer with improved sensor and belt.



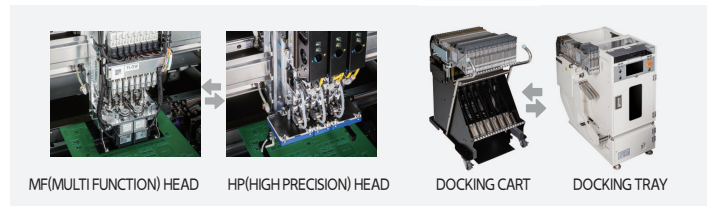
Maintains Placement Accuracy through Automatic Calibration during Production

Maintains placement accuracy throughout production by applying major calibration at the set-up stage during the production.



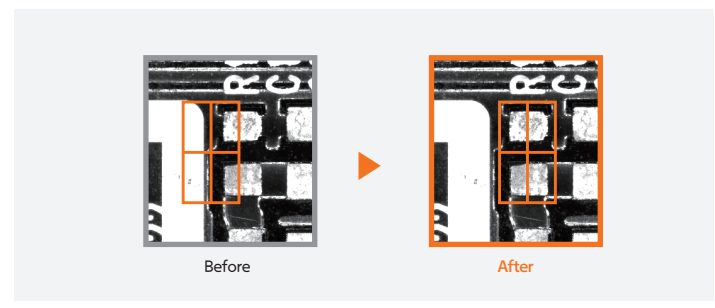
Applicable to Various Products

The industry-leading MF and HP heads are available for a quick replacement. It also allows configuration with different type of heads at both front and rear. It enables a flexible measure for various production models. In addition, it is easy to replace the Docking Cart with the Docking Tray. The ability to replace nozzles in the ANC provides an optimal solution for all types of production.



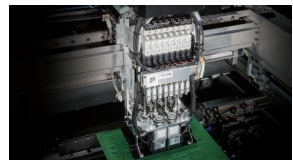
Automated Placement Point Teaching

With the inspection and modification of placement points on standard chips, it significantly reduced the time required to check and fine-tune the placement coordinates during a model change.



Best-in-Class Productivity

Maximum productivity with specialized 3 heads : the High-Speed rotary head for a fast chip-shooting, 2 line head for simultaneous multi-component handling, and wide coverage odd-form head.



Automatic Nozzle Inspection and Cleaning during Production

Inspect and solve issues on nozzle clogging and spring tension during the production. Using the weight sensor and high-pressured air blow to unclog nozzles to prevent damage.



· The specification in this catalog is actual value measured under designated condition. These are subject to change without prior notification.
· The above value may vary depending on operating condition. For inquiry, please contact our sales representative or visit our website.

USA 6000 Phyllis Dr. Cypress, CA 90630, USA T +1-714-373-4200
Europe T +82-70-7147-6322, 6311 F +82-31-8018-3721 (Mexico E mexico@hanwha.com)
Asia T +82-70-7147-6320, 6323 F +82-31-8018-3721 (Vietnam T +84-96-880-7191 / India T +91-98100-01345)
Korea HQ 6, Pangyo-ro 319beon-gil, Bundang-gu, Seongnam-si, Gyeonggi-do, 13488, Korea T +82-70-7147-6258

https://www.hanwhasemitech.com/en Doc. No : SMT-HM520W-PKG CAT-EN-001 Copyright © 2025 Hanwha Semitech Co., Ltd. All rights reserved.

