

AIR WASHER UNIT

Introduction Of Air Washer Unit

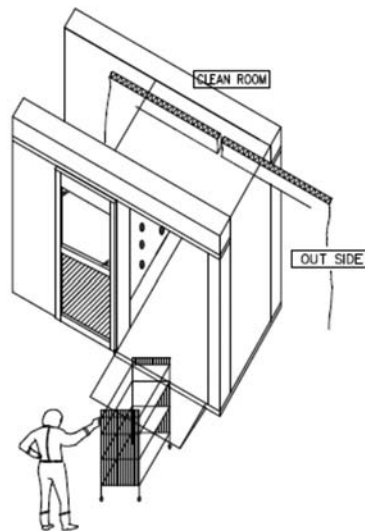
Genel Specifications		
Model		Air shower unit with a sliding door system
Efficiency		0.3 um 99.97% (under D.O.P Test)
Air Volume		20 CMM
Air Velocity		25 ~ 30 m/sec
Hepa Filter	Material	Glass fiber
	Air Volume	36 CCM
	Size	610 x 762 x 150T
	O'ty	1EA
Pera Filter	Material	Polyester
	Size	840 x 500 x 20 T
	O'ty	1EA

Introduction Of Air Washer Unit

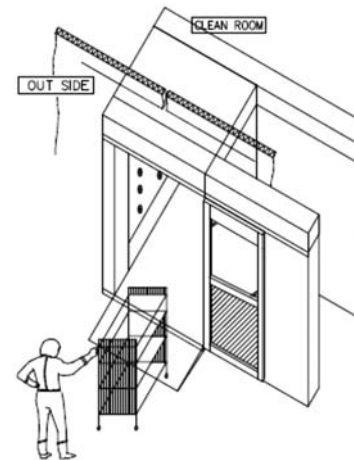
Genel Specifications		
Blower	Type	Sirocco type
	Air Volume	20 CCM
	Static Pressure	60 mm Aq
	Motor	1HP x 2P
	O'ty	1 EA
Material		SS41
Dimension		1.200 (W) x 1.500 (D) x 2.220 (H) mm
Color		Ivory
Electricity		AC220V 3 Phase 60 Hz

3D Drawing

Air Shower Unit with Sliding Door System
(Left side sliding type)

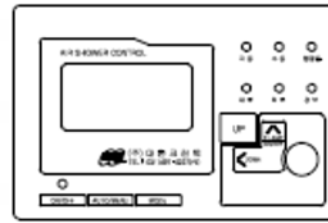
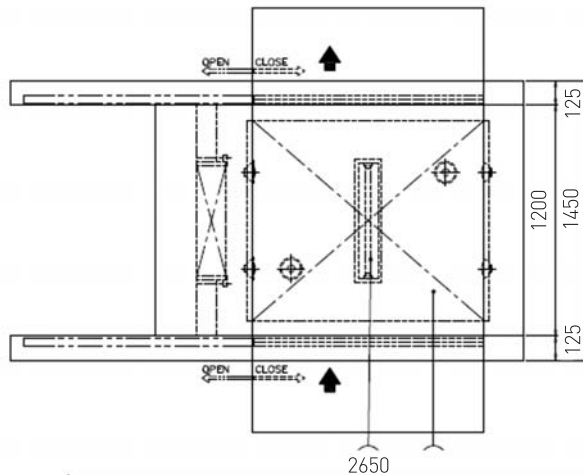


Air Shower Unit with Sliding Door System
(Right side sliding type)

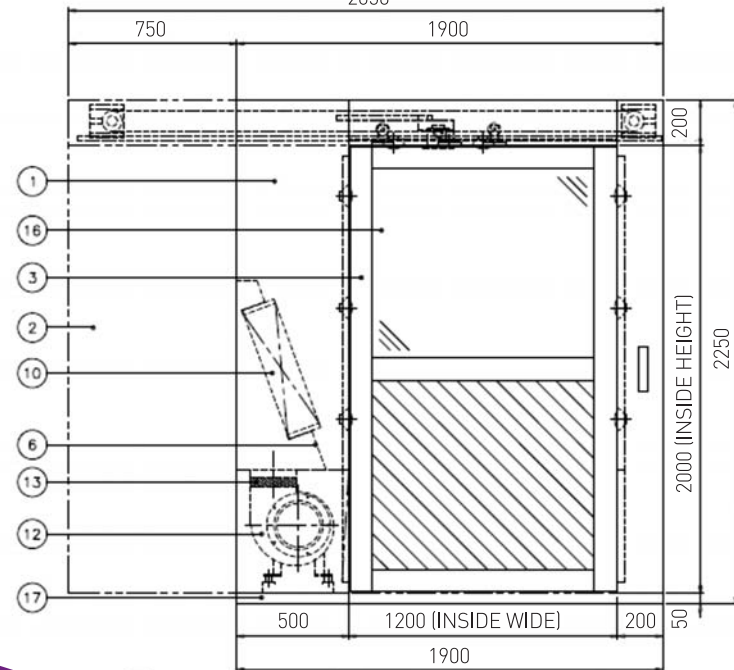


AIR WASHER UNIT

Drawing 2D Left Side Sliding Type



CONTROLLER



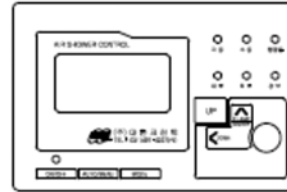
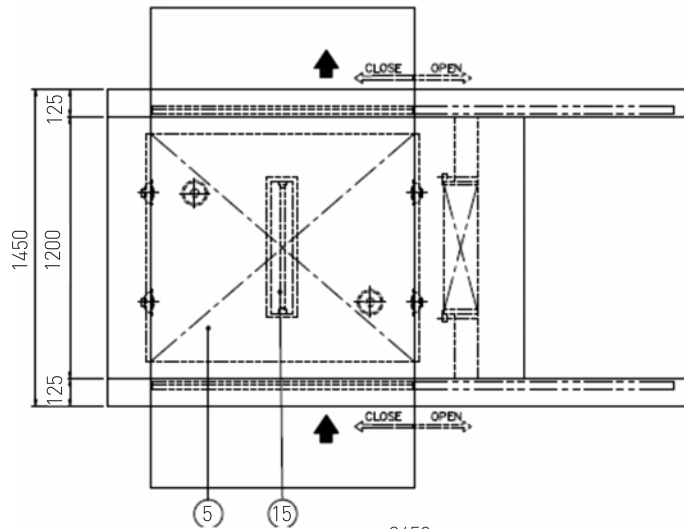
Air Shower

Genel Specifications		Air Shower	
Efficiency		0.3 um 99.97% (under D.O.P Test)	
Air Volume		20 CMM	
Air Velocity		25 ~ 30 m/sec	
Hepa Filter	Material	Glass fiber	
	Air Volume	36 CCM	
	Size	610 x 762 x 150t	
	O'ty	1EA	
Pera Filter	Material	Polyester	
	Size	840 x 500 x 20t	
	O'ty	1EA	
Blower	Type	Sirocco type	
	Air Volume	20 CCM	
	Static Pressure	60 mm Aq	
	Motor	1HP x 2P	
	O'ty	1 EA	
Material		<input type="checkbox"/> SUS / <input checked="" type="checkbox"/> SS41	
Color		<input type="checkbox"/> NONE / <input checked="" type="checkbox"/> IVORY / <input type="checkbox"/> GRAY	
Electricity Power Source		<input checked="" type="checkbox"/> 220V / <input checked="" type="checkbox"/> 3 Phase / <input checked="" type="checkbox"/> 60 Hz	
Quantity		- SET	

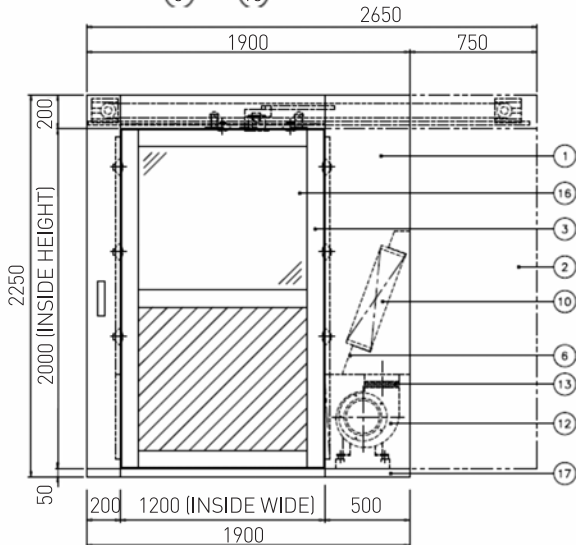
18	Cart Ramp	1200W x 500D x 50T	SS41	2		
17	Bass	1900W X 1450D x 50T	SS41	1		
16	Glass	1230W x 1990D	GLASS	2		
15	F.L Lamp	20W	GLASS	1		
14	Control Panel	<input checked="" type="checkbox"/> DIGITAL / <input type="checkbox"/> ANALOG	-	1		
13	Canvas	-	VINYL	1		
12	Fan & Motor	1 HP	SS41	1		
11	Pre Filter	840 x 500 x 20t	P.E.	1		
10	Hepa Filter	610 x 762 x 150D	G.F.	1	S.C	
9	Zet Nozzle	Ø 28	SUS304	14		
8	Cover (PRE)	1.2t		1	S.C	
7	Cover	1.2t		1		
6	Filter Base	1.2t		1		
5	Nozzle Plat (Upper)	1.2t		1		
4	Nozzle Plat (Side)	1.2t		2		
3	Door	1.2t		2		
2	Autodoor Cover	1.2t		2		
1	Body	1.2t		1		
NO	Description	Specification	SUS	SS41	O'TY	Remark
			Material			

AIR WASHER UNIT

Drawing 2D Right Side Sliding Type



CONTROLLER



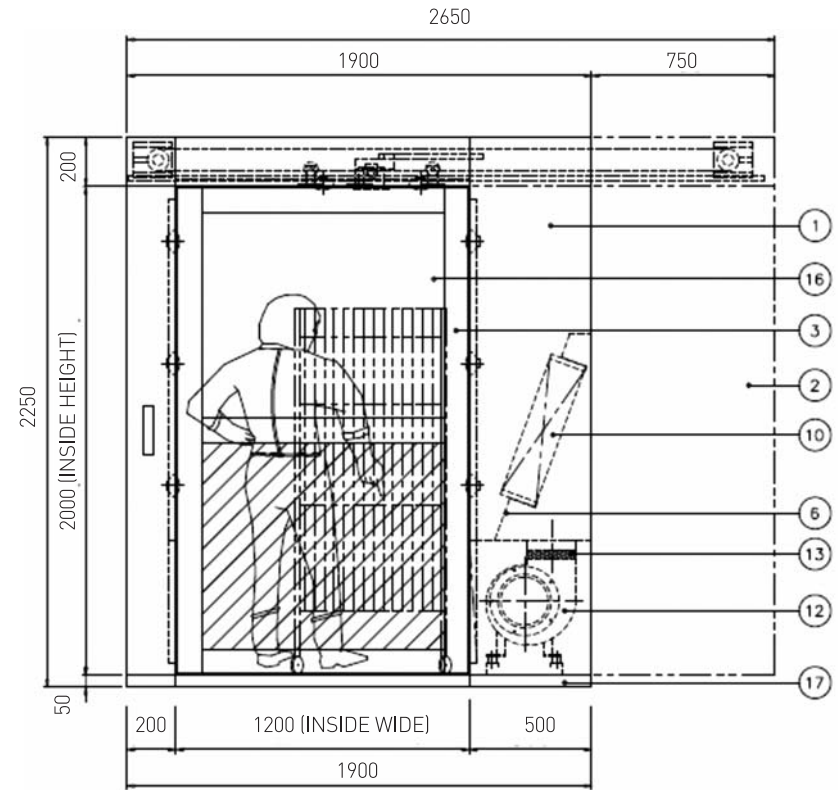
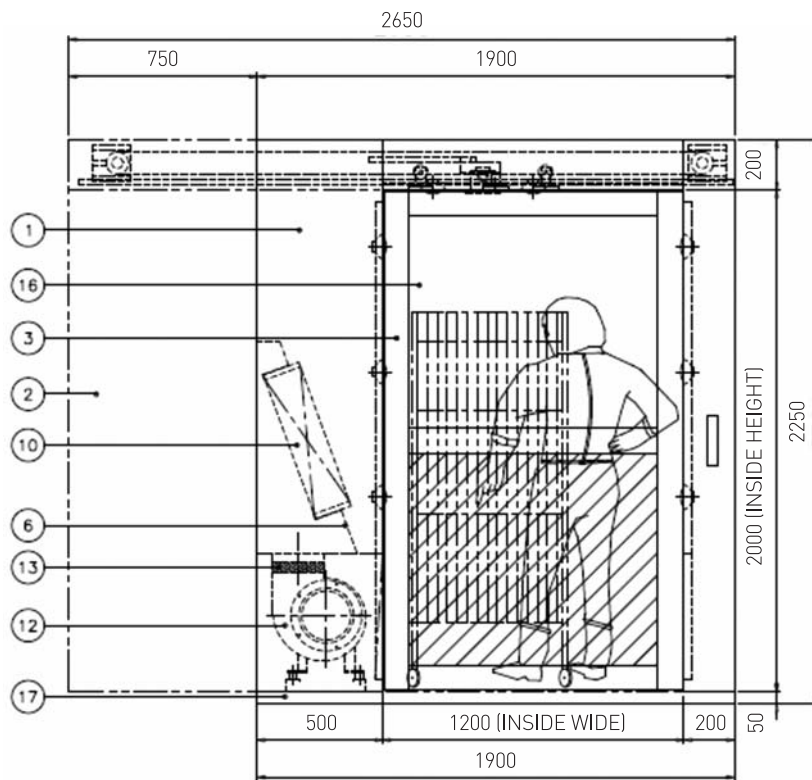
Air Shower

Genel Specifications		Air Shower	
Efficiency		0.3 um 99.97% (under D.O.P Test)	
Air Volume		20 CMM	
Air Velocity		25 ~ 30 m/sec	
Hepa Filter	Material	Glass fiber	
	Air Volume	36 CCM	
	Size	610 x 762 x 150t	
	O'ty	1EA	
Pera Filter	Material	Polyester	
	Size	840 x 500 x 20t	
	O'ty	1EA	
Blower	Type	Sirocco type	
	Air Volume	20 CCM	
	Static Pressure	60 mm Aq	
	Motor	1HP x 2P	
	O'ty	1 EA	
Material		<input type="checkbox"/> SUS / <input checked="" type="checkbox"/> SS41	
Color		<input type="checkbox"/> NONE / <input checked="" type="checkbox"/> IVORY / <input type="checkbox"/> GRAY	
Electricity Power Source		<input checked="" type="checkbox"/> 220V / <input checked="" type="checkbox"/> 3 Phase / <input checked="" type="checkbox"/> 60 Hz	
Quantity		- SET	

18	Cart Ramp	1200W x 500D x 50T	SS41	2		
17	Bass	1900W X 1200D x 50T	SS41	1		
16	Glass	1230W x 1990D	GLASS	2		
15	F.L Lamp	20W	GLASS	1		
14	Control Panel	<input checked="" type="checkbox"/> DIGITAL / <input type="checkbox"/> ANALOG	-	1		
13	Canvas	-	VINYL	1		
12	Fan & Motor	1 HP	SS41	1		
11	Pre Filter	840 x 500 x 20t	P.E.	1		
10	Hepa Filter	610 x 762 x 150D	G.F.	1	S.C	
9	Zet Nozzle	Ø 28	SUS304	14		
8	Cover (PRE)	1.2t		1	S.C	
7	Cover	1.2t		1		
6	Filter Base	1.2t		1		
5	Nozzle Plat (Upper)	1.2t		1		
4	Nozzle Plat (Side)	1.2t		2		
3	Door	1.2t		2		
2	Autodoor Cover	1.2t		2		
1	Body	1.2t		1		
NO	Description	Specification	SUS	SS41	O'TY	Remark
			Material			

AIR WASHER UNIT

Drawing With Rack (Left & Right Side)



sinerji

The Latest Technology,
Excellent Customer Support,
Your Perfect Solutions Partner...



www.sinerji.academy



www.globalservice.center



www.sinerji-vass.com



www.sinerji-technology.center

Address: Oruç Reis Mah. Barbaros Cad. Giyimkent Sitesi 5. Sokak No: 85 (D5-B46-85) Atışalanı 34235 Esenler - İstanbul / TURKEY
Phone: +90 212 438 28 81 **Fax:** +90 212 438 28 15 **E-mail:** info@sinerji-grup.com **Web:** www.sinerji-grup.com