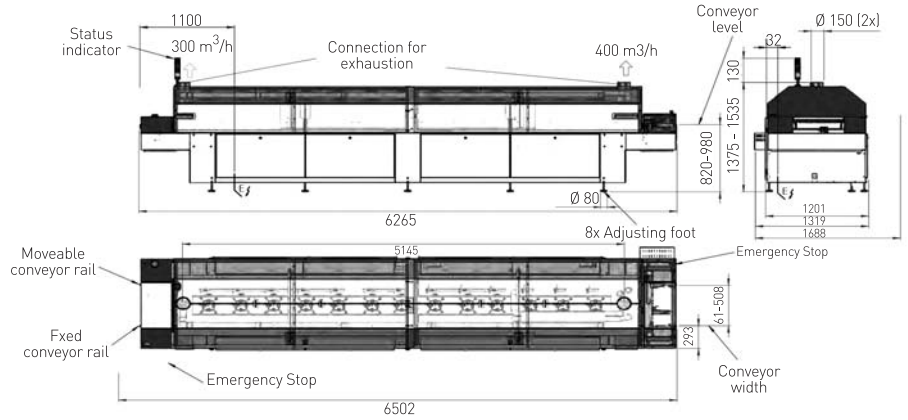


Economically Priced Reflow
System for Maximum Quality
and Minimal Manufacturing Cost

HOTFLOW 3/20e

kurtz ersa

High-quality reflow soldering system for best soldering results with outstanding price-performance



Weight : ca. 1900 kg

Free area required for system
-frontside 1000 mm/40"
-backside 1000 mm/40"



The HOTFLOW 3/20e is the newest reflow system in the Ersas HOTFLOW family, and it delivers exceptional soldering results on account of its superior thermal performance, its low transverse profile and its excellent zone separation.

The "e" attached to its signature stands for "efficiency". By being part of the name of the product, it underlines the importance Ersas has put on the economic efficiency during the development of the system.

For designing the system, Ersas was able to draw on their extensive know-how and a hoard of experience gained during the 25 years of Ersas's excellent track record in building reflow systems. Numerous economical and technical solutions could be ideally combined, without compromising in any way the reliability and uptime of the system. At the same time, the high-grade materials and proven components expected to be found in Ersas equipment are specified, yet, should a component fail, the necessary ease of access to repair and service is available to facilitate these services.

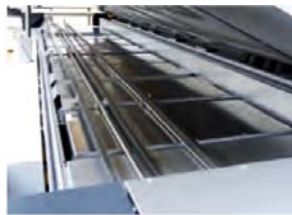
There was no compromise made in the selection of the controller. The HOTFLOW 3/20e is equipped with a premium PLC controller, and it offers a PC with Windows 7 operating system as the user interface.

The comfortable system visualization simplifies programming and has all necessary operating and process data on board. The solder protocol, available in the standard program version, is built on the ZVEI standard, which is a pre-requisite for future traceability applications.

The HOTFLOW 3/20e enthuses not only because of its technical features and performance, but also on account of its very attractive price. Considering it all, and taking it together with its high level of machine availability, excellent TCO values and a quick ROI are assured.



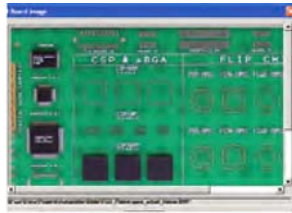
ERSASOFT:
User friendly machine control



Optimized heat transfer,
minimized delta t,
zone separation



Low-mass center support



Ersas Autoprofiler:
Easy offline profiling
for highest machine uptimes.



Integrated bluetooth wireless
module; Data transmission
and display in real-time.



Only high quality
materials are used, also
in the basic system.

Software-Highlights

- ERSASOFT - process data recorder
- ERSASOFT - user friendly machine control
- Auto profiler for rapid offline profiling

Unique Technology Advantages

- Dual, track transport increases throughput
- Optimized heat transfer, minimized Delta T, zone separation
- Internal cooling
- Lowest energy consumption
- Retractable heating modules top and bottom
- Extreme low-mass center support

Features HOTFLOW 3/20e	
Bottom-side preheating, 7 convection modules	■
Cooling, 3 convection modules	■
Low-mass conveyor	■
Low-mass dual track conveyor	□
Low-mass support tubes, 508 mm (20") width	□
Low-mass center support 1 to 2	□
Program controlled width adjustment for conveyors and center support	□
Automatic chain lubrication	■
PC with TFT screen	■
TFT touch screen	□
Status indication light	■
Emergency power supply (transport, hood, SPS, PC)	□
Temperature measurement device (sensor shuttle)	□
Autoprofiler	□

Standard ■ / Option □

Specifications

Model	HOTFLOW 3/20e
Dimensions (basic machine)	
Length	6.265 mm
Width	1.319 mm
Height	1.375 - 1.535 mm
Height (open)	1.705 - 1.865 mm
Weight	approx. 1.900 kg
Paint	RAL 7035 / 7016
Conveyor system	
Working width	45 - 508 mm
Working width (PCB center support)	61 - 508 mm
Board clearance (standard / option)	+34/-40 mm
Center support pin height	14.5 mm
Conveyor speed	20 - 200 cm/min
Conveyor height from floor	820 - 980 mm
Pin-and-chain conveyor	3 mm edge clearance (option 4 mm)
Process zone	
Process length	4.840 mm
Heating zone	3.725 mm
Cooling zone	1.115 mm
Infeed zone	630 mm
Outfeed zone	775 mm
Process chamber width	approx. 700 mm
Heating system	
Convection share	100 %
Gas flow/module	approx. 500 m ³ /h. adjustable
Convection modules	10 top / 10 bottom
■ Preheating	7 top / 7 bottom
■ Soldering zone	3 top / 3 bottom
Nominal rating per module	3.3 kW
Nominal rating last module	4.5 kW
Cooling	
Cooling zone	3-stage version
Coolant	Air
Ambient temperature	max. 32°C (90°F)
Electrical data	
Power	5-wire-system. 3 x 400 V, N, PE
Power tolerance range	±10
Frequency	% 50/60 Hz
Max. fuse rating	3 x 80 A
Nominal rating	68 - 92 kW
Reduced rating	44 kW
Continuous rating for operation	14 - 18 kW
Exhaust rating	
Exhaust stacks	2 stacks. 150 mm (6") Ø each
Exhaust volume	feeding: 300 m ³ /h discharge: 400 m ³ /h
Exhaust monitoring per stack	integrated
Noise level	
Permanent noise level	< 70 dB (A)
Safety devices	
■ 1 main switch ■ 2 x emergency-stop buttons ■ 2 x exhaust monitors	