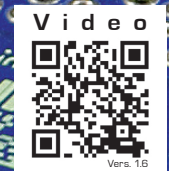
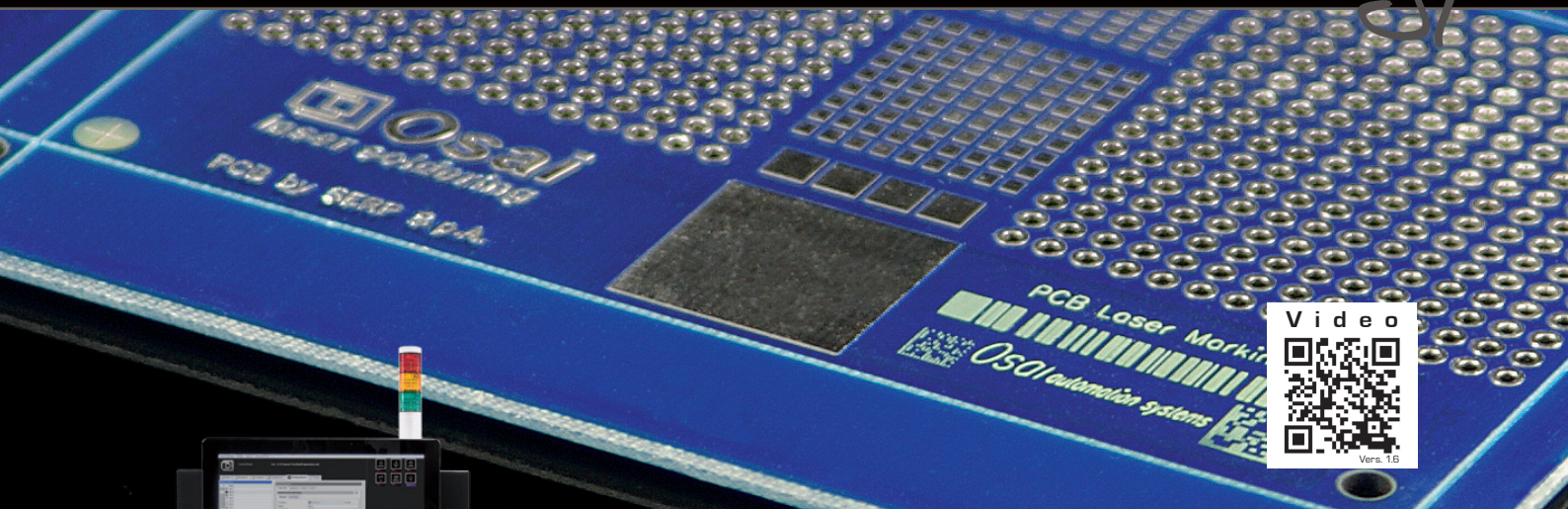


where ideas become technology



Laser Marking

[CO₂ - Green - Nd:YAG - Fiber]

NeoMark Easy is the topnotch equipment for those customers who need In Line machines. Its technology allows to have high quality, fast cycle time (60% time saving compared with conventional Laser Marking systems), flexibility and affordable price.

Based on technological know-how and years of experience, Osai presents a breakthrough solution to the market. The internal flip over has been fully developed and integrated in order to save marking time, ensuring the best quality.

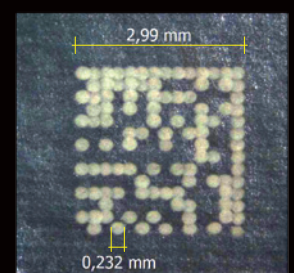
NeoMark Easy is equipped with OSAI Laser (CO₂ - Green - Nd:YAG - Fiber), guaranteeing the well-known reliability already appreciated by the market.

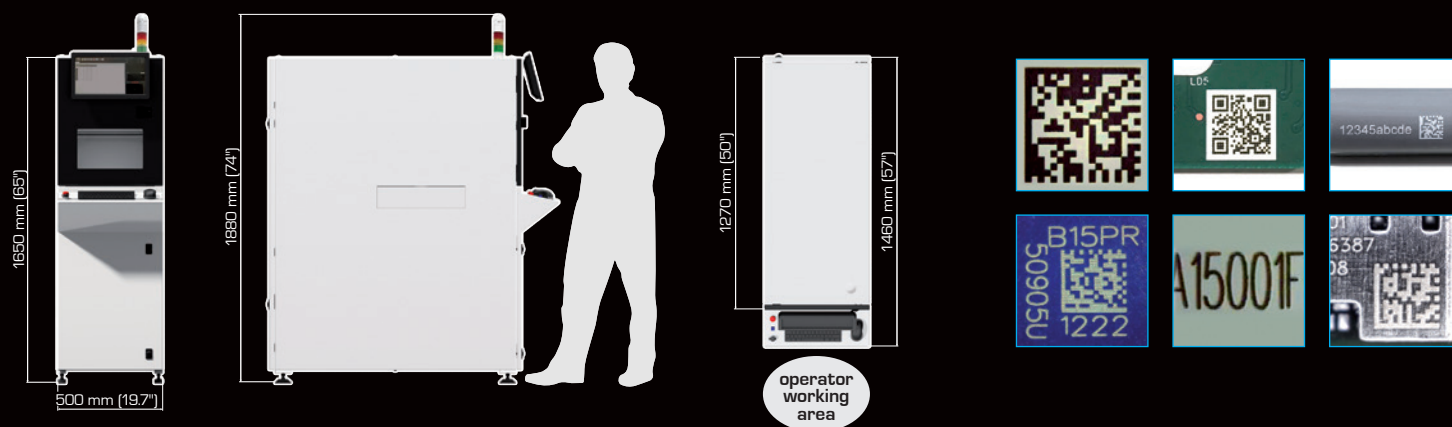
The easy and user-friendly SW, based on Touch Screen HMI, also allows operator with a low level of experience to properly develop recipes in less than 10 minutes.

Main characteristics:

- Laser mark
- Fiducial check for accurate marking position
- Data check on 2D code
- Bad mark recognition
- PCB polarization check
- Fully SMEMA compliant
- Tailored DB communication for traceability
- Remote control
- Datalog available for fast diagnostic

NEOMARK
easy





MACHINE CONFIGURATION

Transport height	SMEMA compliant
Max. transport width	410 mm [16,1"]
Interface	SMEMA
Transfer direction	from left to right (optional from right to left or pass-back)
Operating side	Front of the machine
Fixed rail	Front of the machine

PANEL DIMENSIONS

Panel length	70 mm to 420 mm [2.8" to 16.5"]
Panel width	50 mm to 410 mm [2" to 16.1"]
Panel weight	Up to 3 kg [6.6 lbs]
Transport PCB	1,5 mm carrying edge tubular belt
Panel clearance	40 mm Up / 40 mm Down
Panel thickness	0.5 mm to 3.2 mm [19.6 mils to 81.3 mils]
Marking area, length	Up to 350 mm [0 to 13.7"]
Marking area, width	Up to 350 mm [0 to 13.7"]

INSTALLATION REQUIREMENTS

Power supply	CE 230V	ETL	208/240/277/440/480/575V
Power supply system	CE 1P+N+PE - 50/60 Hz, +/-10%	ETL	2Ph+GND 3 Wire - 50/60 Hz, +/-10%
Power consumption	Typical 1 KW		
Air pressure	6 bar [87 p.s.i.]		
Average consumption	<10 NI/min. [2,64 gpm]		

MACHINE DESCRIPTION

Length x Width x Height	500 mm x 1.450 mm x 1.650 mm [19.7" x 57" x 65"]
Codes	Data Matrix ECC200, Code 39, Code 128, 2/5 Interleaved, QR code
Repeatability	+/- 100 µm [4 mils]
Weight	Approx 500 kg [1102 lbs]
Color	RAL 9018, RAL 7016
Noise level	< 70 dB

LASER DESCRIPTION

Max Laser Power	10W [air cooled - CO ₂] / 5-10-20W [Green] / Up to 30W [Nd:YAG] / Up to 50W [Fiber]
Smallest Spot Laser [CO ₂ - Green - Nd:YAG - Fiber]	Starting fom 70 µm [2,7 mils]

UPGRADES AND OPTIONS

- Internal flip over for top bottom marking
- Double mechanical stop for marking area enhancement
- Optical check fast scan field
- Automatic conveyor width adjustment
- Active carbon exhauster
- Open interface management [OSAI standard input/output data]

The specifications given in this document represent the state of engineering at the time of publishing. Osaì reserves the right to make modifications on the specifications and materials.