

Standard of Mid-class

# SM Series

## Specifications



Model Name		SM471 PLUS	SM481 PLUS	SM482 PLUS	SM485
Alignment		Fly Camera	Fly Camera + Fix Camera (Option)	Fly Camera + Fix Camera	Fly Camera + Fix Camera
Number of Spindles		10 Spindles x 2 Gantry	10 Spindles x 1 Gantry	6 Spindles x 1 Gantry	4 Spindles x 1 Gantry
Placement Speed		78,000CPH (Optimum)	40,000CPH (Optimum)	30,000CPH (Optimum)	22,000CPH (Optimum)
Placement Accuracy	Chip	±40µm@±3σ	±40µm@±3σ	±40µm@±3σ	±40µm@µ±3σ
	QFP	±50µm@±3σ	±30µm@±3σ	±30µm@±3σ	±30µm@µ±3σ
Component Range	* Fly Camera	Chip IC, Connector BGA, CSP 0402 ~ □ 14mm	0402 ~ □ 16mm	0603 ~ □ 22mm (***) 0402 ~ □ 14mm	0402 ~ □ 21mm
	** Fix Camera	IC, Connector BGA, CSP -	□ 16mm ~ □ 42mm (Standard) □ 42mm ~ □ 55mm (MFOV) L55mm ~ L75mm Connector (MFOV)		□ 16mm ~ □ 42mm (Standard) □ 42mm ~ □ 55mm (MFOV) L75mm ~ L150mm Connector (MFOV)
	Max. Height	12mm	10mm (Fly) 15mm (Fix)	12mm (Fly) 15mm (Fix)	15mm (Fly) 26mm (Fix)

\* SM471 PLUS, SM481 PLUS, SM485 Fly Camera Spec. : Based on Mega FOV 24mm (SM482 PLUS Fly Camera Spec. : Based on Mega FOV 25mm)

\*\* SM481 PLUS, SM482 PLUS, SM485 Fix Camera Spec. : Based on Mega FOV 45mm (Mega FOV 35mm : Option)

\*\*\* SM482 PLUS can mount 0402 ~ □ 14mm when Fly Camera Mega FOV 16mm is applied.

PCB Size (mm)	Min.	50(L) x 40(W)				
	Max.	Single Lane	510(L) x 460(W) 610(L) x 460(W) (Option)	460(L) x 400(W) 510(L) x 460(W) (Option) 610(L) x 510(W) (Option) Max. 1,500(L) x 460(W) (Option)	460(L) x 400(W) 510(L) x 460(W) (Option) 610(L) x 510(W) (Option) Max. 1,200(L) x 510(W) (Option)	460(L) x 400(W) Max. 740(L) x 460(W) (Option)
		Dual Lane	460(L) x 250(W) 610(L) x 250(W) (Option)	-	-	-
PCB Thickness		0.38 ~ 4.2				
Feeder Capacity (8mm standard)		120ea/112ea (Docking Cart)				
Utility	Power	AC200 / 208 / 220 / 240 / 380 / 415V (50/60Hz, 3Phase)				
		Max. 5.0kVA	Max. 3.5kVA	Max. 3.5kVA	Max. 3.5kVA	
	Air Consumption	0.5 ~ 0.7MPa (5.0 ~ 7.0kgf/cm <sup>2</sup> )				
		350Nℓ/min 50Nℓ/min (Vacuum Pump)	160Nℓ/min 50Nℓ/min (Vacuum Pump)	180Nℓ/min 50Nℓ/min (Vacuum Pump)	180Nℓ/min 50Nℓ/min (Vacuum Pump)	
Mass (kg)		Approx. 1,820	Approx. 1,655	Approx. 1,600	Approx. 1,600	
External Dimension (mm)		1,650(L) x 1,690(D) x 1,485(H)	1,650(L) x 1,680(D) x 1,530(H)	1,650(L) x 1,680(D) x 1,530(H)	1,650(L) x 1,680(D) x 1,530(H)	

Experience Your **SMART FACTORY**



Standard of Mid-class

# SM Series



- 6, Pangyo-ro 319beon-gil, Bundang-gu, Seongnam-si, Gyeonggi-do 13488, Korea
- Tel : USA. +82-70-7147-7151, Europe. +82-70-7147-6322 Fax : +82-31-8018-3721
- Please note that specifications and product information in this catalog are subject to change without notice.



# Hanwha Bestseller



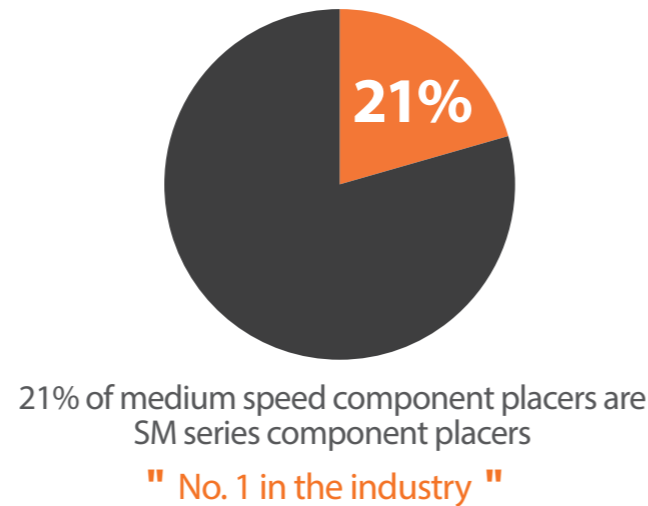
## Know-how Accumulated over 30 Years!

With 17,000 sets having been sold since its market launch in 2005, the SM series component placers Hanwha's best selling products. Please experience Hanwha's know-how with the SM series component placers verified by many customers worldwide.

### Accumulated production of 17,000 sets



### No. 1 in the industry of medium speed component placers



### Outstanding Cost Performance

As a standard of medium speed component placers, SM series component placers provide all essential functions necessary for PCB production at a reasonable price, allowing investment to be returned in a short period of time.



### The highest performance among the component placers of the same class

Optimized to various production environments with a line-up of the highest speed/accuracy among component placers of the same class.

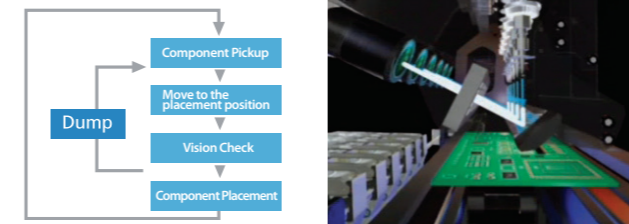
Description		SM471PLUS	SM481PLUS	SM482PLUS
Speed	Optimum	78,000 CPH	40,000 CPH	30,000 CPH
Accuracy	0402	±40μm	±40μm	±40μm
	BGA/QFP	±50μm	±30μm	±30μm

## SM Series Common Feature

Convenient in-line operation through unification of main modules and in-line platform

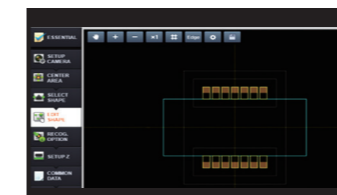
### On-the-fly Placement Method

Owing to Hanwha's own On-the-fly image recognition technology which allows component recognition without stopping while moving after component pickup, placement speed is maximized by minimizing the moving time between the pickup position and placement position and reducing the recognition time to zero.



### Added a new function maximizing the operational convenience of customers

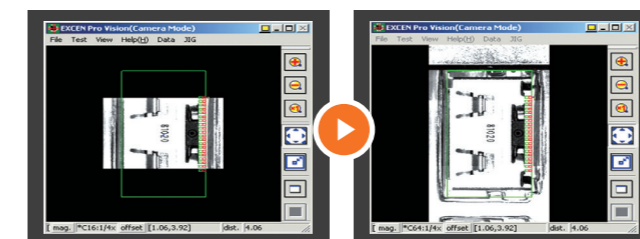
#### Easy Component Registration New Part Editor



A Drag & Drop component registration system, allowing registration of component information through automatic recognition and rotation by simply clicking the mouse. (When applying Elite2)

In addition, user convenience is further reinforced by unifying the on-line/off-line component registration systems.

#### Panorama View Function



Since large-sized components are not viewed in one screen, it is hard to adjust their pickup or placement positions. In order to remove such inconvenience, the panorama view function is added to allow large components to be viewed within the FOV of a camera.

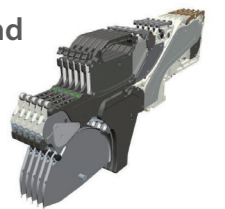
### The highest applicability to long and large PCBs among machines of the same class

Description	Single Lane	Dual Lane
SM471PLUS	Max.610(L)x460(W)	Max.610(L)x250(W)
SM481PLUS	Max.1,500(L)x460(W)	-
SM482PLUS	Max.1,200(L)x510(W)	-
SM485	Max.740(L)x460(W)	-

※When applying an option for a large PCB

### Mixed Use of Electric Feeder and Pneumatic Feeder

Mixed use of electric and pneumatic feeders in the same feeder base is available for SM series component placers. The investment in production can be minimized by using these feeders along with existing feeders.



### Component Monitoring before/after Placement



Checks for nozzle contamination during production to prevent non-insertion and dumping of a large number of components in advance, ensuring high quality production.

**Time of inspection** - Before/after ANC; before/after component placement; and after component dumping

### Multi-Vendor Component Management Function

No.	IO	Part	SubPart
1	○		
2	○		
3	○		
4	○		
5	○	R1005	R1005-1
6	○	R1005	R1005-2
7	○	R1005	R1005-3
8	○		None
9	○		R1005-1
10	○		R1005-2
11	○		R1005-3

When the same components are supplied from different component supply devices, this function allows components to be used without changing a PCB file and downloading a new PCB file.

# Fast Chip Shooter SM471 PLUS

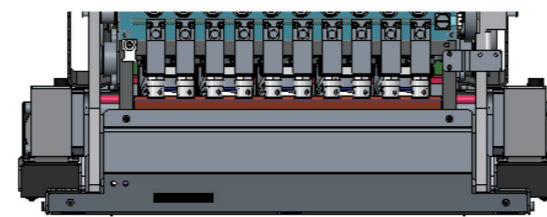
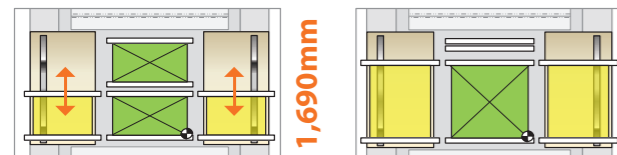
The SM471PLUS is a high performance chip shooter which applies two gantries equipped with 10 spindles per head as well as a new Fly Camera system. Compared to the existing SM471 model, its placement speed is increased further to 78,000CPH, which is the highest in the world among chip shooters of the same class. In addition, it is basically applicable to components from 0402 (01005inch) chips to maximum □ 14mm IC components. Its actual productivity and placement quality is improved by applying high-speed and high precision electrical feeders. With two gantries and dual lane, the SM471PLUS supports various production modes to maximize the productivity of SM series machines.

## Features

Placement Speed	Chip 78,000CPH (Optimal)
Applicable Component	0402(01005inch) ~ Max. □ 14mm (h12mm)
Placement Accuracy	±40 $\mu$ m@ $\mu$ ±3 $\sigma$ /Chip, ±50 $\mu$ m@ $\mu$ ±3 $\sigma$ /QFP
Applicable PCB	L510xW460 (Standard) L610xW460 (Option)

## Dual lane and shuttle conveyor maximizes the productivity of SM series component placers

Dual lane production maximizes the productivity of small boards and the shuttle conveyor ensures extensibility to the production of large boards.



10Spindle x 2Gantry

## Supports for various production modes according to production characteristics

Join Mode	Common use of front and rear feeders (less than D 250mm)
Single Mode	Production of medium- and large-sized boards (greater than D 250mm)
Twin Mode	Separate placement at front and rear sides (less than D 250mm)

Even when a problem occurs to one placement head or when the components in the feeder runs short, another head can help place components, allowing continuous production without stopping the machine

Simultaneous production at the top and bottom



# Flexible Placer SM481 PLUS

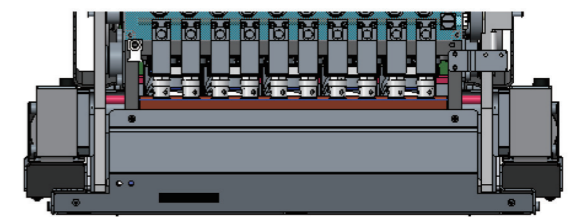
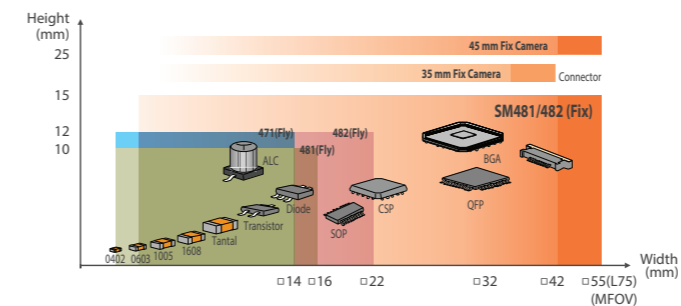
The SM481PLUS can perform high-speed placement of chips at 40,000CPH and QFPs at one per 1.1 seconds, respectively (each at optimum speed) by applying the on-the-fly recognition technology patented by Hanwha, which enables component placement at the highest speed among all medium speed component placers. With one-gantry structure having a high-speed piano head with 10 nozzles, the machine can be operated with minimum manpower using one side of the machine. Being able to produce long boards with lengths of up to 1,500mm, the machine boasts of its applicability to the largest PCBs among SM series component placers.

## Features

Placement Speed	Chip 40,000CPH (Optimal)
Applicable Component	0402 ~ □ 16mm (h10mm) (Fly) ~ Max. □ 55mm,L75 (h15mm) (Fix)
Placement Accuracy	±40 $\mu$ m@ $\mu$ ±3 $\sigma$ /Chip, ±30 $\mu$ m@ $\mu$ ±3 $\sigma$ /QFP
Applicable PCB	L460xW400x1Lane (Standard) L1,500xW460x1Lane (Option)

## Production speed and component coverage suitable for general-purpose high-speed placement

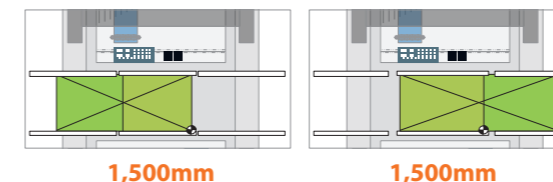
General-purpose high-speed machine among SM series component placers, which applies a high-speed piano head with 10 nozzles and an option for an upward camera.



10Spindle x 1Gantry

## 1,500mm long board

Two-staged placement using an extended conveyor allows production of long boards with lengths of up to 1,500mm. (The SM482PLUS can produce boards with lengths of up to 1,200mm)



## One-side operation

With single gantry and single lane structures optimized for machine operation using only one side of the machine, the production area and manpower can be utilized efficiently.



# Multi-Functional Placer SM482 PLUS

The SM482PLUS can be applied to components from 0603 microchips to □ 22mm IC components by applying the on-the-fly recognition technology patented by Hanwha, which enables component placement at the highest speed among all medium speed component placers. In addition, it can recognize components of □ 42mm with 0.4mm fine pitch with a 45mm camera by applying a high pixel Camera system to the Fix camera. It also allows high precision (30 micron) placement of IC components and provides a polygon recognition algorithm for easy registration of components of complicated shapes.

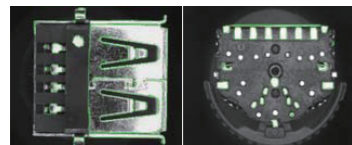
## Features

Placement Speed	Chip 30,000CPH (Optimal)
Applicable Component	0603 ~ □ 22mm (h12mm) (Fly) ~ Max. □ 55mm, L75 (h15mm) (Fix)
Placement Accuracy	±40 $\mu$ m@ $\mu$ ±3 $\sigma$ /Chip, ±30 $\mu$ m@ $\mu$ ±3 $\sigma$ /QFP
Applicable PCB	L460xW400x1Lane (Standard) L1,200xW510x1Lane (Option)

## Powerful Camera algorithm

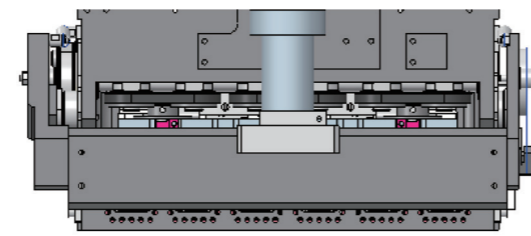
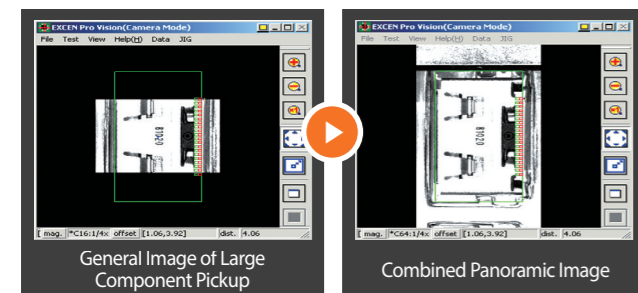
Increases the recognition accuracy using the component image noise removal function and auto-teaching function. The Fly camera helps recognize and calibrate the components including Chip, TR, BGA, QFP, etc., while moving them to the placement position after pickup.

- Automatic Real Time Pickup Position Calibration System
  - Polygon Function
- Abstracts and recognizes a component wholly



## Panorama view

For components whose size exceeds the FOV of a camera, the panorama view function that combines split component images into one is used. The solution optimized for irregular shaped SMD components is provided by teaching the pickup/placement position easily.



6Spindle x 1Gantry

# Wide Ranged Component Placer SM485

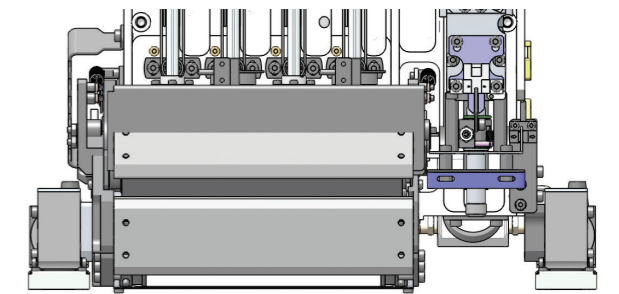
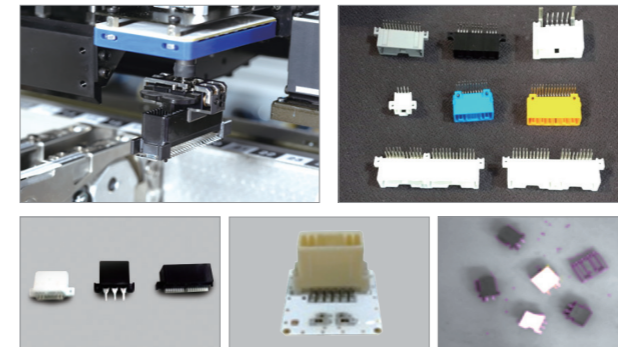
The SM485 is a wide range chip mounter that allows high-speed placement of small components as well as precise placement of odd-shaped components with 4 sets of high-speed spindles and 1 set of precision spindle with back-light system and force control function. It can place various odd-shape components from 0402 chips up to □ 55mm IC components (H26mm), Long connectors of 150mm, Shield cans, Bare chips, Insert components, etc. In addition, The SM485 provides an all-in-one solution that allows high quality placement and management of components from chips to odd-shaped components without adding an extra expensive machine.

## Features

Placement Speed	22,000 CPH
Applicable Component	0402 ~ □ 21mm (h15mm) (Fly) ~ □ 55mm (h26mm) (Fix) L150mm x 25mm
Placement Accuracy	±40 $\mu$ m@±3 $\sigma$ /Chip, ±30 $\mu$ m@±3 $\sigma$ /IC
Applicable PCB	L460xW400x1Lane (Standard) L740xW460x1Lane (Option)

## Optimum solution for the placement of Insert components

Provides various gripper nozzles and force control function to place precisely odd-shaped components of various sizes and heights. Allows precise placements of insert components and bare chips that need to control the pressure in z-axis direction for placements.

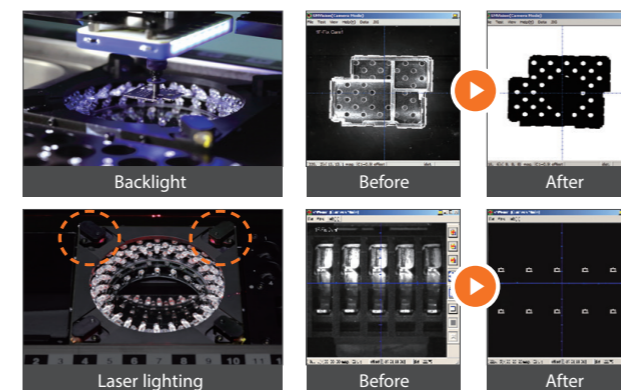


4high-speed+1high precision Spindlex1Gantry



## Various lighting for component recognition

Allows more precise placement through shadow recognition by applying backlight for the accurate recognition of components such as shield cans with high reflectivity. In addition, provides the laser lighting as a option to recognize pins of inserted components more accurately.



High mix low volume line

**SM482PLUS**

Chip & Odd Component  
30,000CPH(Optimum)



**SM471PLUS + SM481PLUS**

Chip & Odd Component  
118,000CPH(Optimum)



Low mix middle volume line

**SM471PLUS (\*2) + SM482PLUS**

Chip & Odd Component  
186,000CPH(Optimum)



High mix middle volume line

**SM471PLUS (\*2) + SM482PLUS + SM485**

Chip & Odd Component  
208,000CPH(Optimum)



Performance Improved

**SM471PLUS +**

Chip only  
78,000CPH



**+ SM482PLUS**

Odd Component  
30,000CPH(Optimum)



**+ SM481PLUS + SM482PLUS**

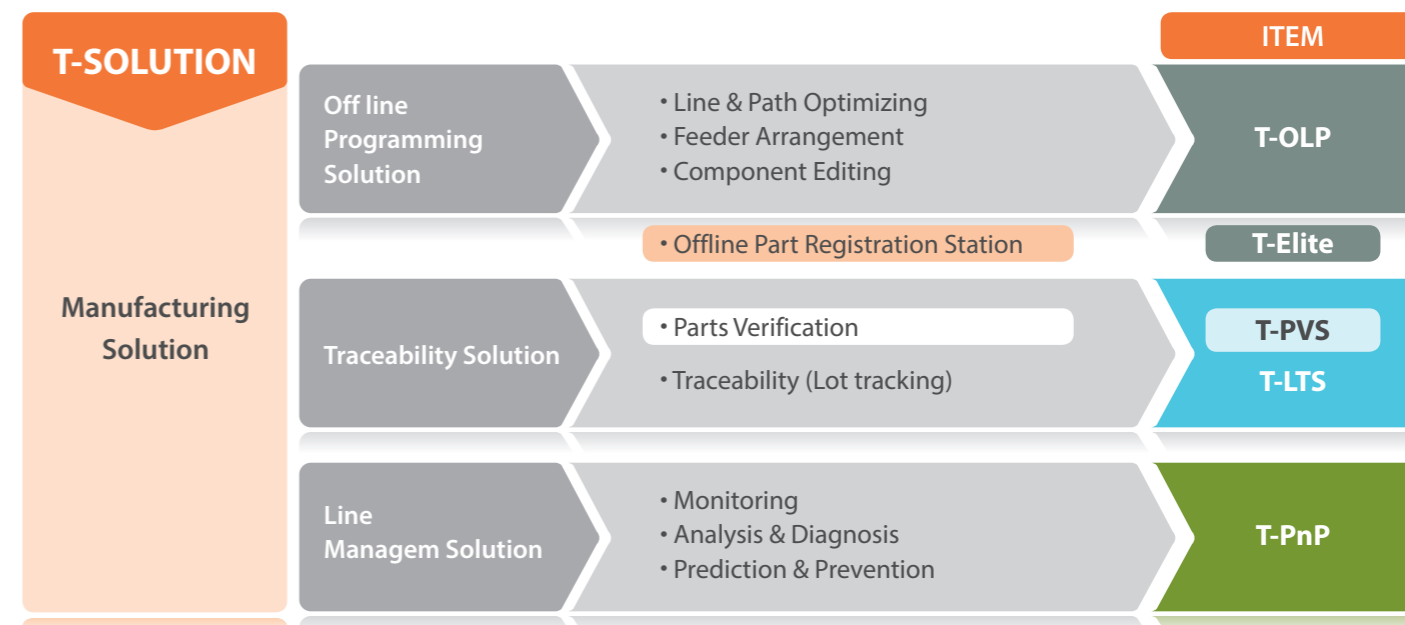
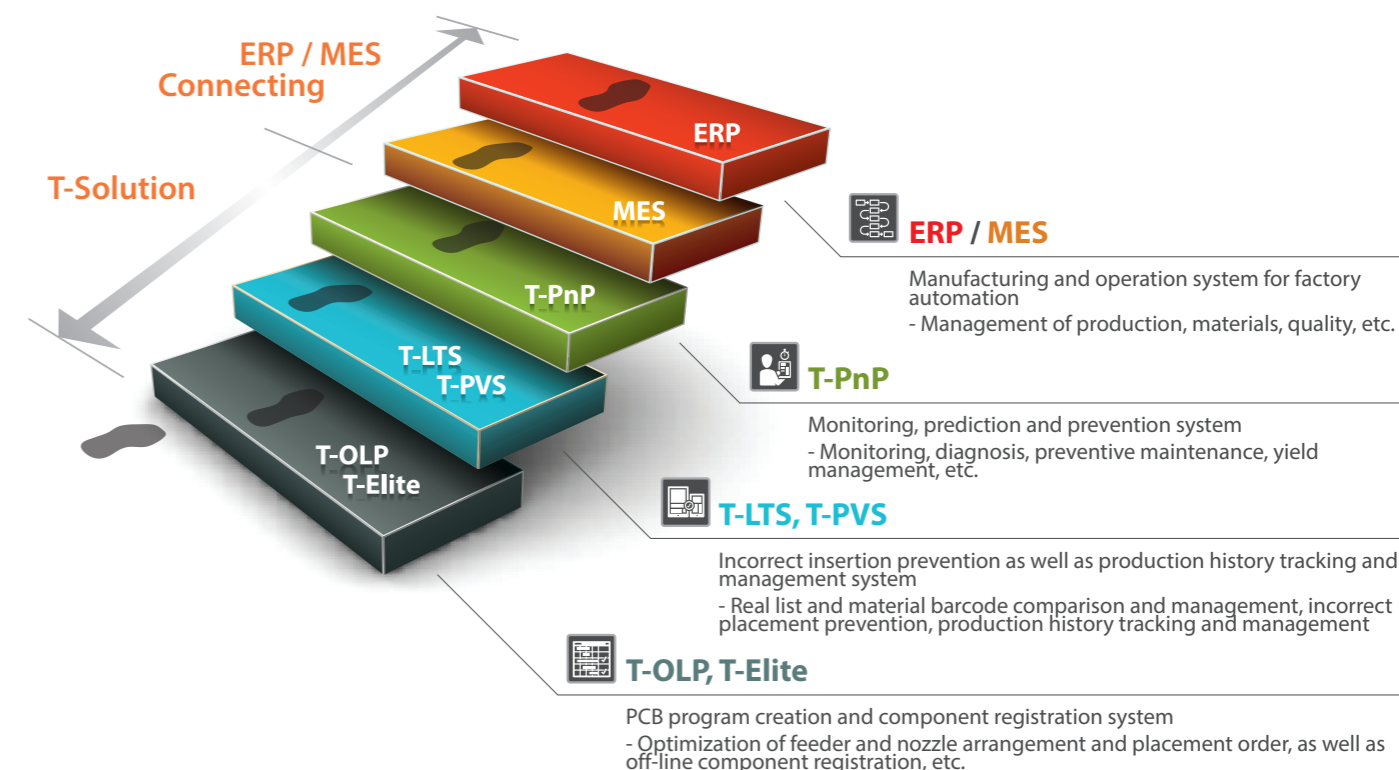
Odd Component  
70,000CPH(Optimum)



※ The above production speed is based on the optimum. It differs depending on the customers' production environment. For a more detailed line configuration, please contact our salesperson.

# T-Solution for SM Series

Maximizes productivity in connection with the T-Solution, an optimized software for integrated management, and realizes stable quality.



## Tray Feeder

### STF100D (Dual Magazine Feeder)

- Consisting of the upper and lower magazines with 12 pallets, the dual tray feeder allows the component tray to be replaced without stopping the machine
- Allows various odd-shaped components to be supplied in great quantity
- 24 staged 24 trays / 48 trays



### STF100S (Side Tray Feeder)

- Side component supply device
- Maximizes component supply by utilizing the rear feeder base by 100%
- The connecting C/V helps maximize the utilization of the machine
- Allows replacement of the component tray by pallet without stopping the machine



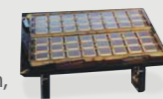
### STF100N

- Allows replacement of the component tray by pallet without stopping the machine
- 20 staged 20 trays / 40 trays



### One Staged Tray Feeder

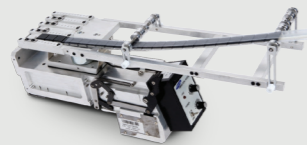
- Allows easy installation and removal of a tray feeder in and from a feeder base
- Allows component pickup at high speed
- Allows installation of a tray horizontally or longitudinally according to the shape of a tray
- Available Tray: 2", 4", 136 x 316mm, 200 x 316mm, 272 x 316mm



## Stick Feeder

### Vibration Feeder

- Frequency control method
- Available voltage and current: DC24V, 0.8A±0.8
- Quantity of sticks to be used: Max. 4 pieces
- Components available for supply: SOP, SOJ, PLCC, Connector, etc.



### Stack Stick Feeder

- Available for maximum 9-staged stacking (based on T 20mm stick)
- Non-stop component supply
- Allows easy removal and installation of feeders using the feeder slots as well as air and electricity of the component plater



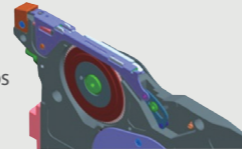
## Tape Feeder

### Electric Tape Feeder

- Aligns the pickup positions automatically for the improvement of the simultaneous pickup rate
- Allows the supply speed to be set for stable component supply
- Automatic feeding pitch recognition function
- Allows mixed use with a pneumatic feeder in the same feeder base

### W4P1 Feeder

- Possible to handle the W4P1 reel for the supply of 0402 and 03015 microchips
- High supply accuracy



### SMART Feeder

- As an 'Auto Loading/Splicing Free' feeder, reduces the manpower required to perform setup and model change
- Applicable to a small quantity of reels



## Other Feeders

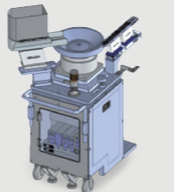
### 6-Lane Lens Feeder

- Allows simultaneous supply and pickup of LED lenses at six lanes



### Bowl Feeder

- Allows simultaneous supply and pickup of LED lenses at five lanes



### Label Feeder

- Allows simultaneous supply of labels at 6 lanes (Applies individual detection sensor)
- Possible to handle reel widths of up to Max. 105mm
- ※ For more detailed specifications of labels, please contact our salesperson



## Etc.

### Docking Cart

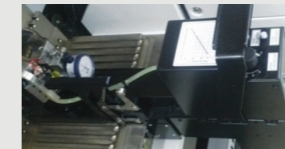
- Feeders are installed in advance or replaced collectively in the docking cart off-line before model change, which helps reduce the feeder replacement time and improve productivity



## Etc.

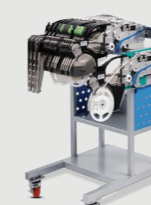
### Flux Dipping Unit

- Rotary Flux Dipping Unit
- Installed in the feeder base in the same manner as the tape feeder

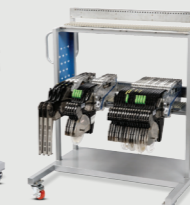


### Feeder Rack/ Replacement Jig

- Allows safe transport and storage of tape feeders



20 Slot



100 Slot

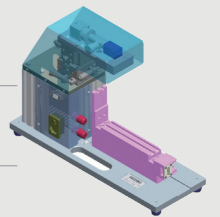
### Tape Cutter

- Reduces operator's work by cutting a tape automatically



### Feeder Calibration Jig

Feeder Inspection Function	Supply accuracy inspection Saved data inspection (Serial No, Firmware Version, sensor resetting, mapping)
Feeder Calibration Function	Sensor resetting, mapping serial number change
Available Feeders	SME 8mm W4P1 / 12mm/ 16mm (Option)



## Accessories for Traceability Solution

### T-LTS : Traceability (Lot Tracking)

### T-PVS : Parts Verification

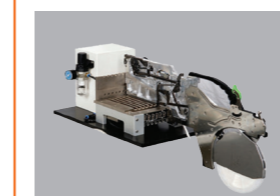


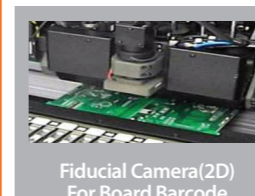
Table Top Station



Board Scanner



Reel Scanner



Fiducial Camera(2D)  
For Board Barcode Scanning



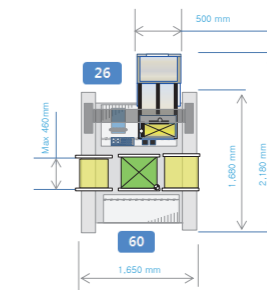
Movable Station



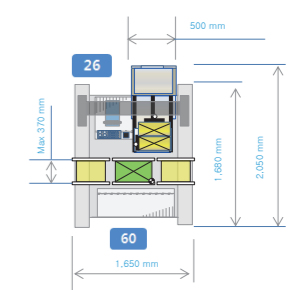
Barcode Printer  
For ID Registration

## When applying a tray feeder

### SM481PLUS, SM482PLUS

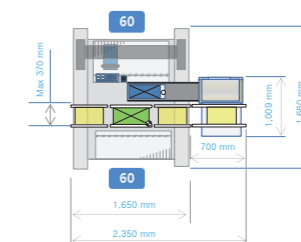


**SM481PLUS :**  
The spindle and fiducial camera center recognize two trays (in the width direction)



**SM482PLUS :**  
The spindle and center recognize two trays (in the width direction)

### SM481PLUS, SM482PLUS



### SM471PLUS

