

•Solid Construction type Walk in
Temperature and humidity Chambers >>

•ETSP-WTH series

ETSP-WTH series are climatic (temperature & humidity control) version walk in chambers provide multiple capabilities create repeatable environmental conditions for durability or operating status of large size components and products.

Solved noise, bad humidity control and condensation, slow temperature/humidity variations, unbalanced air distribution inside the chamber.

ETSP-WTH series are manufactured according to the Total Quality procedures, in compliance with the ISO 9001 standard.

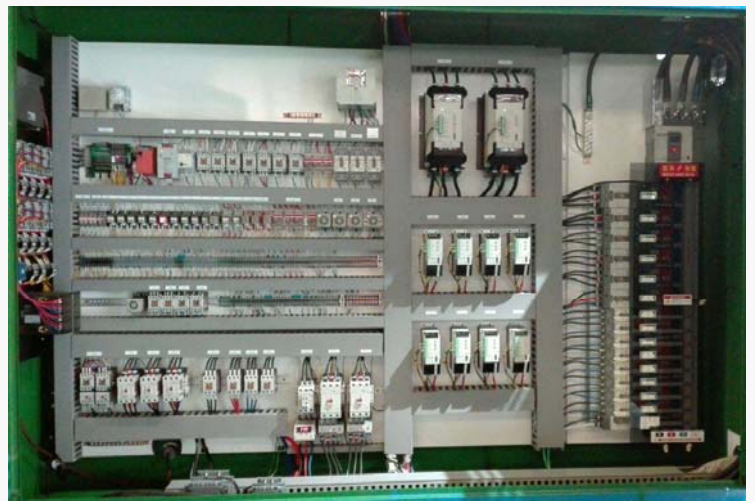


General Features

- Rapid cooling with low noise level by using semi-hermetic compressors and ecologically friendly refrigerants.



- High reliability and operator safety electrical unit.

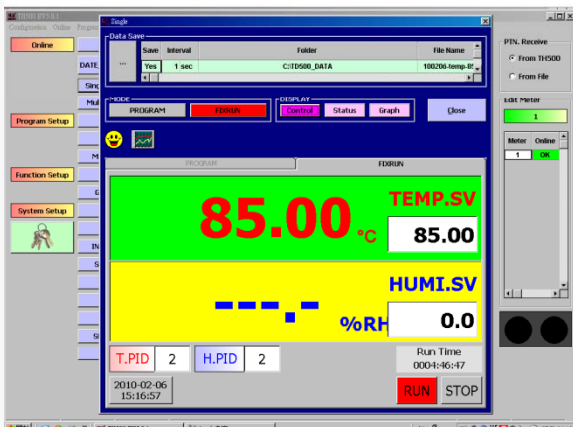


Solid construction type Walk in Temperature and humidity Chambers ETSP-WTH series

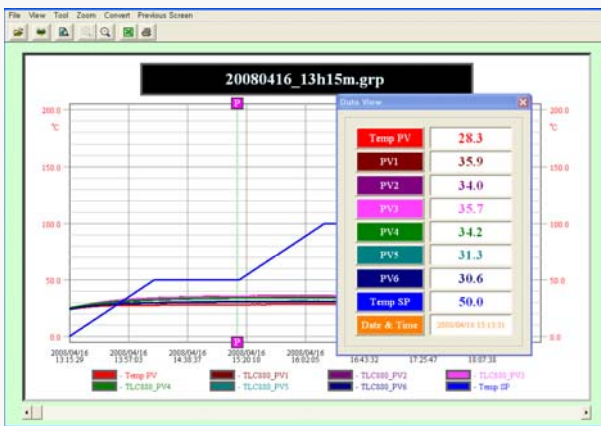
- Automatic and precision water level control to maintain accurate control of relative humidity and temperature.



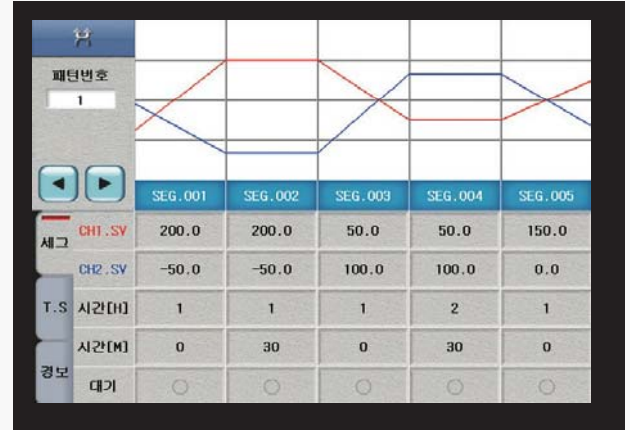
- Friendly, flexible, up-to date control and management systems.



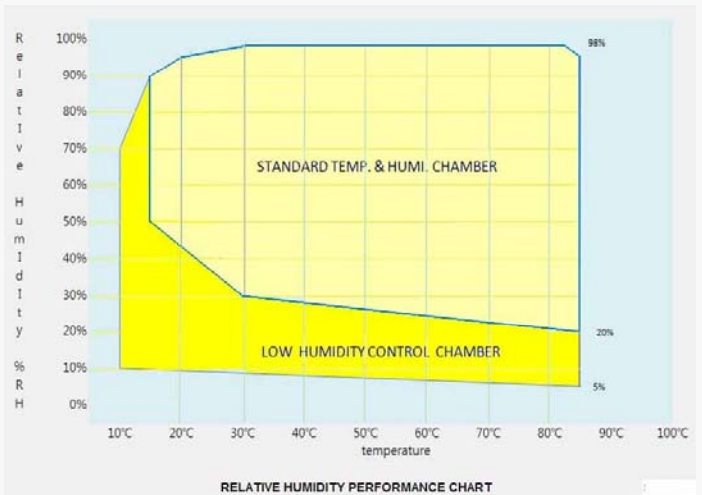
- RS232/485 oven networking with free control software



- Integrated program editor and program storage.



- Wide range of temperature and humidity control.



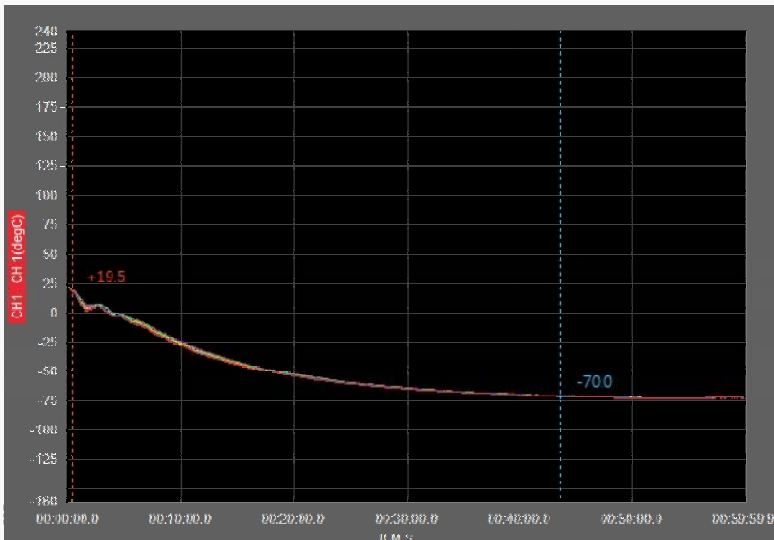
- Allows easy servicing and upgrades by error diagnosis system and inspection system.



Solid construction type Walk in Temperature and humidity Chambers ETSP-WTH series

Technical Features

- Temperature range: -35 °C ~+150 °C (Single stage refrigeration system)
-70 °C ~+150 °C (Cascade refrigeration system)
(changeable on customer request)
- Temperature accuracy: less than ± 0.3 °C
- Temperature stability(fluctuation): less than ± 0.5 °C
- Temperature uniformity: less than ± 2.0 °C



CH(ALL)		=
CH1	CH 1	-70.0
CH2	CH 2	-69.8
CH3	CH 3	-69.7
CH4	CH 4	-69.7
CH5	CH 5	-69.9
CH6	CH 6	-69.9
CH7	CH 7	-69.7
CH8	CH 8	-69.6
CH9	CH 9	-69.7

- Humidity range: 10% ~ 95%RH
- Humidity stability: less than ± 1.5 % RH
- Humidity uniformity: less than ± 3 % RH
- Dew point temperature range: 5 °C ~ 85 °C
- Heating-up rate: More than 2.5 °C/min on average with no load measured in air inlet
- Cooling-down rate: More than 1.0 °C/min on average with no load measured in air inlet
- Input Power Requirements: 3PH 380V, 50Hz/60Hz

(Changeable according to customer specification.)

Included accessories

- Viewing window (heater wire including, reinforced window) and interior light
- RS232/485 oven networking with control software
- Cable port and rubber plug (selectable among 50,80,100mm)
- Hard copy/soft copy instruction and maintenance manual
- Water reservoir and connector to supply water automatically
- Three color tower light
- End of cycle, Hi & low limit audible alarm
- Real time clock (Auto start)



Solid construction type Walk in Temperature and humidity Chambers **ETSP-WTH** series

Technical Specification

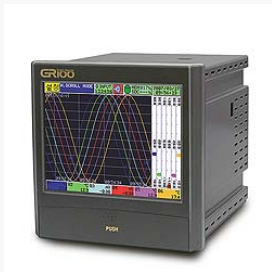
Model	Internal dimensions	External dimensions	Useful capacity
ETSP-WTH 1800	1,100 x1,100 x1,500 (WxDxH) mm	1,780 x 2,200 x 2,220 (WxD xH) mm	1,800 liters
ETSP-WTH 2700	1,800 x1,000 x1,500 (WxDxH) mm	2,555 x 2,098 x 2,220 (WxD xH) mm	2,700 liters
ETSP-WTH 3640	1,300 x2,000 x1,400 (WxD xH) mm	2,100 x 3,100 x 2,120 (W xD xH)mm	3,640 liters
ETSP-WTH 8000	2,000 x2,000 x2,000 (WxD xH) mm	2,300 x 2,800 x 2,450 (W xD xH)mm	8,000 liters
ETSP-WTH 18000	3,000 x3,000 x2,000 (WxD xH) mm	3,300 x 4,100 x 2,500 (W xD xH)mm	18,000 liters
ETSP-WTH 19600	2,200 x3,300 x2,700 (WxD xH) mm	2,500 x 4,400 x 3,300 (W xD xH)mm	19,600 liters
ETSP-WTH 22000	2,600 x3,000 x3,000 (WxD xH) mm	2,900 x 4,700 x 3,740 (W xD xH)mm	22,000 liters
ETSP-WTH 26400	3,000 x4,000 x2,200 (WxD xH) mm	2,300 x 5,100 x 2,650 (W xD xH)mm	26,400 liters

Note :Custom designed chambers are available on user's demand.

- **Controller:** Programmable type TFT Color touch screen LCD controller (Max. 120 patterns, Max. 1,200 profile), Set resolution: temperature 0.01°C ,humidity 0.1%RH, automatic recording and show graphs for temperature and humidity
- **CFC free refrigerant** (R404A, R23)
- **Condensing** Air cooled or water cooled type
- **Safety devices** Electrical Leakage breaker, circuit breaker, over heat protector, refrigerator high and low pressure switch, Water low level switch, compressor built-in protector, pressure relief port, Electrical over current relay. Emergency shut off switch, Motor reverse-prevention relay

Options

- Paperless digital chart recorder
(selectable among 6CH, 8Ch, 12CH, 18CH)



- Additional port hole and rubber plug
(selectable among 50,80,100mm)
- Side door and side viewing window
- Customization available.

- Chiller (when the water cooled condenser adopted.)



- sloped stepping plate

