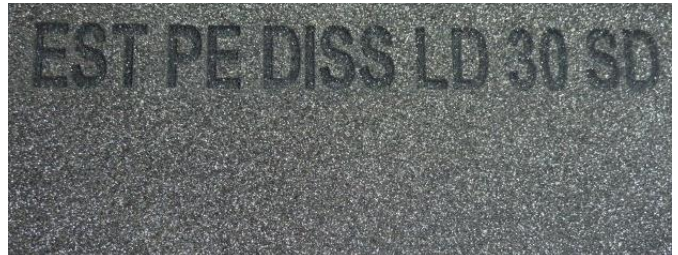


BLACK DISSIPATIVE PE FOAM
DT4000



Product Specifications

Property	Test Procedure	Unit	LD30CN
Density	BS ISO 7214 1998	Kg/m ³	30
Compression Stress-Strain	BS ISO 7214 1998		
10 %		kPa	62
25 %		kPa	78
40 %		kPa	111
50 %		kPa	147
Tensile Strength	ISO 7214 1998	kPa	375
Tensile Elongation	ISO 7214 1998	%	60
Tear Strength	BS EN ISO 8067 1995	N/m	385
Shore Hardness 00 Scale 10mm cell/cell thickness	ISO 868 1985	00	62
Recommended Operating Temperature Range		°C	+95 max -70 min
Thermal Conductivity Mean temp of 10°C	ISO 8302 1991	W/m.K	0.039
Flammability	FMVSS.302 - Burn rate	<100mm/min	Pass: 8mm and thicker
Surface Resistivity	ESD S-11.11 - 1993	Ohms/sq	10 ⁷

Part Number and Features

Part Number	Features
83-400-xxxx	Standard Sheet - 1900 x 1000 mm
26-4xx-xxxx	Foam customized settings