



**PROCESS SOLUTIONS  
YOU CAN COUNT ON**

## iCoat-3 SERIES

SELECTIVE CONFORMAL COATING MACHINE

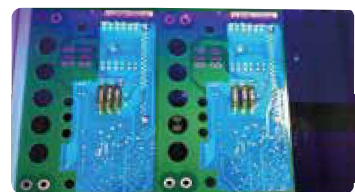
### Features & Benefits

- Suitable for panelized or palletized PCBs, high throughput requirements, process flexibility and large area coating
- Dual or Quad valves configuration, a variety of valve arrangements, adapts to the production needs of diverse panels
- Automatic coating detection mount over conveyor exit or X-axis for coating result check

### Product Description

The iCoat-3 is designed to strike a balance between cost and performance. This selective conformal coating machine comes with a single head, 2 nozzle structure (spray and dispense) with 3 axis servo control (X,Y,Z).

Optionally, iCoat-3 can be equipped with either "dual simultaneous coating" or "four direction tilt for the right side nozzle". These features enhance the iCoat-3 performance with the lowest cost of ownership.



Selective coating on the bottom or top side of PCBA



Accurate selective coating of components and IC pins

ANDA Technologies USA, Inc.  
info@anda.us  
+1 510 270 8648  
47639 Lakeview Boulevard, Fremont, CA 94538, USA



# Specifications :

## System Specifications

### iCoat-3 Selective Conformal Coating Machine

Board Handling	
Standard Work Area	X: 450 mm (Standard), 580 mm (Optional) (X: 17.71" (Standard), 22.83" (Optional)) Y: 450 mm (Standard), 580 mm (Optional) (Y: 17.71" (Standard), 22.83" (Optional)) Z: 100 mm (Z: 3.93")
Maximum Components Height	± 90 mm (± 3.54") from PCB
PCB Edge Clearance	≥ 5 mm (≥ 0.19")
Single Spray Width	2 – 30 mm (0.078" – 1.18")
Max. Conveyor Width	460 mm (18.11")
Min. Conveyor Width	50 mm (1.96")
Transmission system	
Process Flow	L to R (Standard), R to L (Optional)
Conveyor Height	900 ± 20 mm (35.43" ± 0.79")
Conveyor Speed (XY)	0.5 – 5 m/min
Conveyor Width Adjustment	Automatic (motorized)
Rotation	Optional
Z Axis Configuration	
No. of Valves	Dual valves in a row (fixed width) (Option: Quad valves; dual row; tilt; manual adjustable width)
Maximum Speed	800 mm/s
Repeatability	± 0.02 mm (± 0.0007")
Facility	
Standard Footprint	L: 900 mm (option: Max. 1010 mm) (L: 35.43" (option: Max. 39.76") W: 1300 mm (option : Max. 1360mm) (W: 51.18" (option: Max. 53.54") H: 1675 mm (H: 65.94")
Weight	530 kg (optional 580 kg)
Motor Power	DC 24 V 69 W × 2
Air Requirement	0.4 Mpa
Exhaust Requirement	15 m <sup>3</sup> /min
Input Power	AC 220 V 50/60 Hz
Total Power	2.2 kw
Interface	
Controller	Integrated microprocessor controllers
Software	Anda user interface software with Windows 7
Programming	Keyboard & mouse mode
Communications Protocol	SMEMA

## Standard Features

- 2 valves can be accommodated in the standard machine
- PC with LCD monitors, keyboard and mouse (height adjustable)
- Auto dipping and purging waste collection system
- LED UV lamps for inspection
- PCB clamping system
- ESD grounding point
- CE certified

## Optional Features

- Heavy duty conveyor
- Dual lane conveyor system
- 2 stage conveyor
- CCD vision camera
- 2 nozzles simultaneous coating and tilt
- Material level detection
- Pallet return conveyor (underneath)
- Barcode or 2D code scanning system
- Material tank : 1 gal / 3 gal / 5 gal / 10 gal
- UPS and voltage stabilizer



iCoat-3: Dual valves with fixed width



iCoat-3A: Dual valves with width adjustment & tilting for both L or R sides, adjustable width at X axis from 50 – 200 mm (1.96" – 7.87")



iCoat-3B: Quad valves in a row with tilting for both L or R sides, adjustable width at X axis from 50 – 200 mm (1.96" – 7.87")



iCoat-3C: quad valves in dual row with tilting for both L & R sides, adjustable width at X axis from 50 – 200 mm (1.96" – 7.87")

