

Auto Verification-4.0 Auto-9 View Series

Industry 4.0 / Smart Factory Solution



Technology and Features

- Auto-9-View automatically takes pictures of a point of interest from 9 different positions and provides a significant high resolution image.
- Without touching the PCB, having a high performance and reliable verification.

Accurate Inspection Support System - Impossible to make wrong verifications of failures!

- 9 high-end cameras provide significant information even for components which are critical to see.
- HD-pictures from different angles for an accurate and fast verification.
- Production quality improvement by using accumulated inspection result.
- Automatic recording of verified NG & OK images possible
- Clear and reliable pictures - no shadow effects.
- Easy to use, intuitive, accurate, reliable and fast
- Auto-Positioning function available



225° View



180° View



135° View



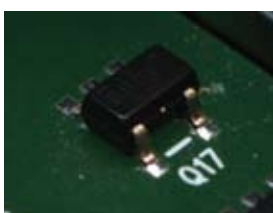
270° View



Top View



90° View



315° View

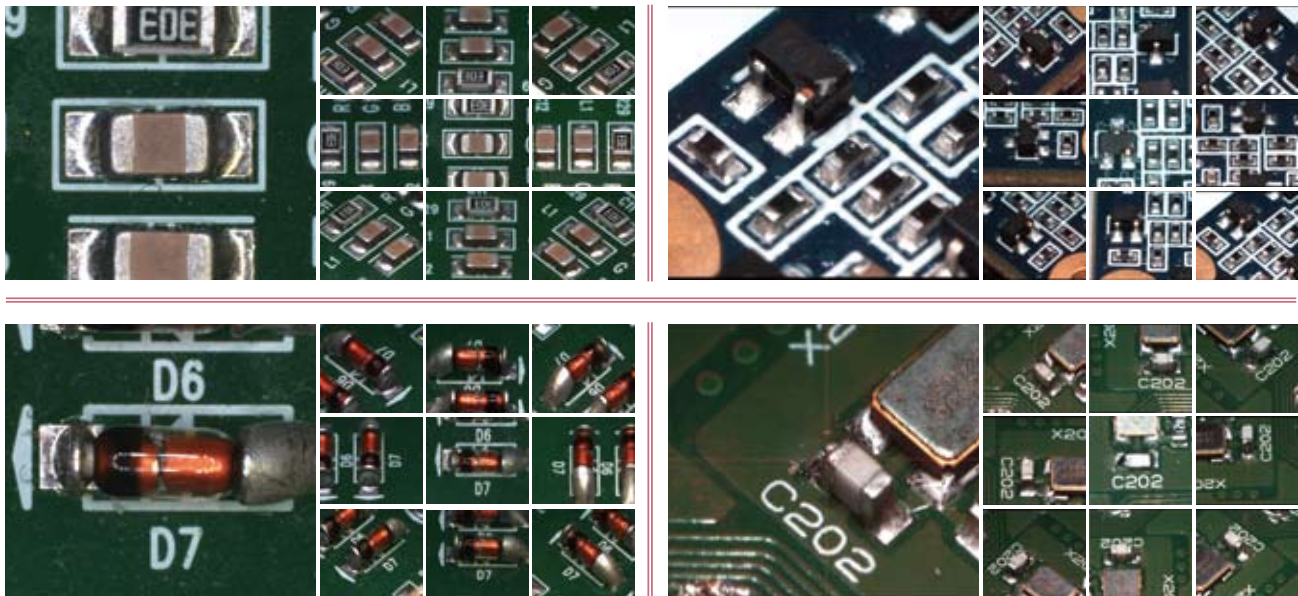


0° View



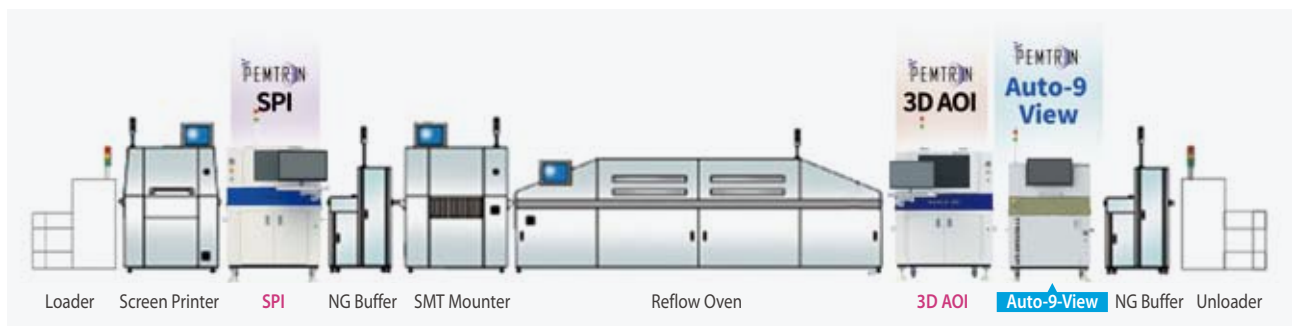
45° View

Accurate defect position and Clear image



Real-time quality & process management system

Innovative quality control – no need to touch the PCB



PEMTRON Link system

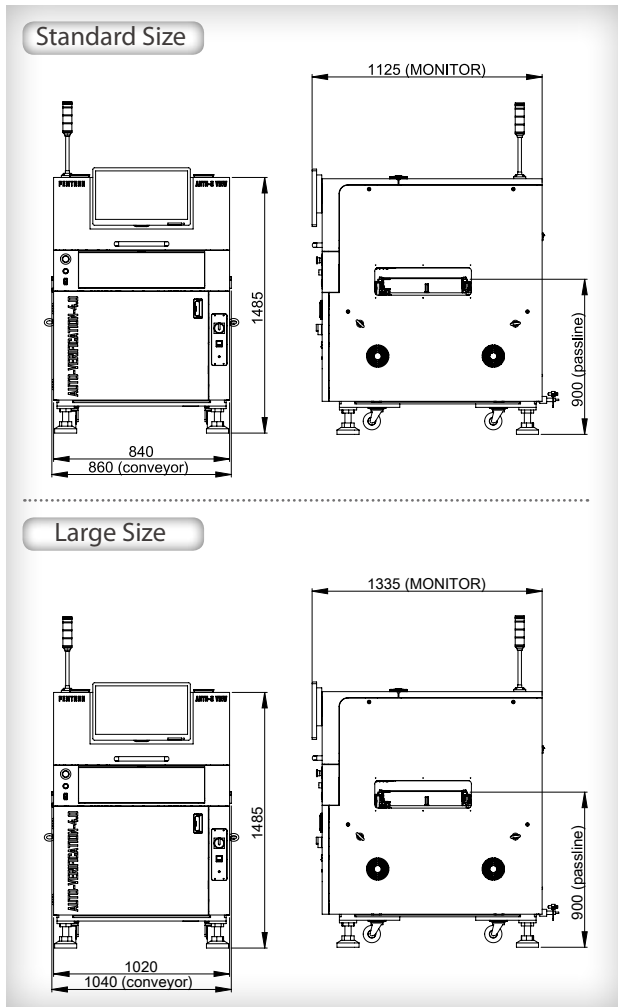
- SPI, AOI, Auto-9-View link solution
- Critical components can be defined -> for verification without failure message

User friendly interface

- Natural User Interface for intuitive use
- AOI, THT, Auto-9-View using the same program

Auto-Verification-4.0 Auto-9 View Series

DIMENSION



SPECIFICATIONS

Model	Auto-9 View	
Camera	1.3M pixel	
FOV Size	6.5mm x 5mm	
Resolution	5µm	
Lighting	RGB Stroboscopic	
Gantry Type	Servo Motor + Ball Screw	
Clearance	Top 50mm / Bottom 50mm	
PCB Size	Standard	Min. 50mm x 50mm Max. 330mm x 250mm
	Large	Min. 50mm x 50mm Max. 510mm x 460mm
PCB Thickness	0.4-7.0mm	
Electrical Requirements	200 – 240 VAC, 50/60 Hz	
Power Consumption	1.8KW (8.5A Max @ 220AC)	
Dimension	Standard	840 x 1065 x 1485mm (33 x 42 x 58inch) *1045mm – not include Monitor
	Large	1020 x 1275 x 1485mm (40 x 50 x 58inch) *1275mm – not include Monitor

*Specifications subject to change without notice.



PEMTRON CORPORATION

#1406, (Byuksan Digital Valley VI,
Gasam-Dong) 219, Gasan digital 1-ro,
Geumcheon-gu, Seoul, Korea. 08501
Tel: +82 2 2160 5000
Fax: +82 2 2627 3770
kevin@pemtron.com

PEMTRON TECHNOLOGY, CORP

3450 Wilshire Blvd., Ste 108-73 Los Angeles,
CA 90010-2208
Tel: +1 800 850 8764(TROI)
steve.wong@pemtron.com

PEMTRON EUROPE GMBH

Kronstadterstrasse 4, 81677 Munich / Germany
Tel: +49 89 20 80 26 96 5
spark@pemtron.com
mvielsack@pemtron.com

PEMTRON MEXICO

Av. Mariano Otero 1917 Local A-5,
Residencial Victoria, Guadalajara, Jalisco,
Mexico C.P. 44560
Tel: +52 333 157 0636
jaime.arreola@pemtron.com

PEMTRON TECHNOLOGIES ASIA PTE LIMITED

Flat/Rm 1003, 10F Office Twr Hutchison
Logistics Ctr 18 Container Port Rd South,
Kwai Chung, HK
Tel: +852 3665 6245
kevin@pemtron.com

PEMTRON(ShenZhen) TECHNOLOGY Co.,Ltd

RM 508, A2 Build, Pei Hong Industry Park,
No.1 Ke Hui Road. Middle Zone, High-New
Science & Technology Park, Nanshan District,
Shenzhen. P.R.China
Tel: +86 138 2881 1057
tao@pemtron.com