

SM-3032 Zoom Stereo Microscope



SM-3032B1



SM-3032B2



SM-3032B3



SM-3032B4

Introduction

SM-3032 series Zoom Stereo Microscopes offer sharp 3D images with high zoom ratio. The microscopes have features of high resolution, large depth of field, excellent color restoration and contrast. Optional eyepieces, auxiliary objectives, light source, stands and other accessories can fulfill different requirements.

Feature

1. Excellent optical system, providing sharp and high contrast image and ensure large depth of field.
2. Outstanding Ergonomic Design with 40° viewing angle, suitable for long-term sitting observation.
3. The angle for left & right light path is 12°, with stereoscopic effect, large viewing field, high zoom ratio.
4. Various stands and other accessories can fulfill different requirements.

We have 4 stands and only binocular head, the models are: SM-3032B1, SM-3032B2, SM-3032B3, SM-3032B4, "B"

means binocular.

“1” means the stand with round pillar, without illumination.

“2” means the stand with square rail pillar, without illumination.

“3” means the stand with round pillar, with transmitted and Incident illumination.

“4” means the stand with square rail pillar, with transmitted and Incident illumination.

Application

SM-3032 series stereo zoom microscopes are of great value in a variety of applications for education, scientific research and industrial area, such as circuit board repair, circuit board inspection, surface mount technology work, electronics inspection, coin collecting, gemology and gemstone setting, engraving, repair and inspection of small parts.

Specification

Item	Specification	SM-3032B1	SM-3032B1	SM-3032B1	SM-3032B4
Viewing Head	Binocular Viewing Head, Inclined at 40°, Interpupillary Adjustable Distance 50-75mm	●	●	●	●
Eyepiece	WF10×/22mm	●	●	●	●
	WF15×/16mm	○	○	○	○
	WF 20×/12mm	○	○	○	○
	WF10×/22mm eyepiece with cross hair	○	○	○	○
Zoom Objective	0.7×-4.5×	●	●	●	●
Zoom Ratio	1: 6.5	●	●	●	●
Working Distance	110mm	●	●	●	●
Focus Arm	Diameter 76mm	●	●	●	●
Auxiliary objective	0.5×, W.D. 189mm	○	○	○	○
	2×, W.D. 36mm	○	○	○	○
Stand	Round Pillar Stand Focusing Distance 115mm	●		●	
	Square Rail Stand Focusing Distance 80mm		●		●
Base	Base Size: 330×300mm	●	●	●	●
Stage Plate	Frosted Glass Plate, diameter 100mm	●	●	●	●
	White&Black plate, diameter 100mm	●	●	●	●
Illumination	Incident Illumination 100V-240V/ 3W LED			●	●
	Transmitted Illumination 100V-240V/ 3W LED			●	●
Package	1pc/carton, 38*38*48cm, Gross Weight 7kg	●	●	●	●

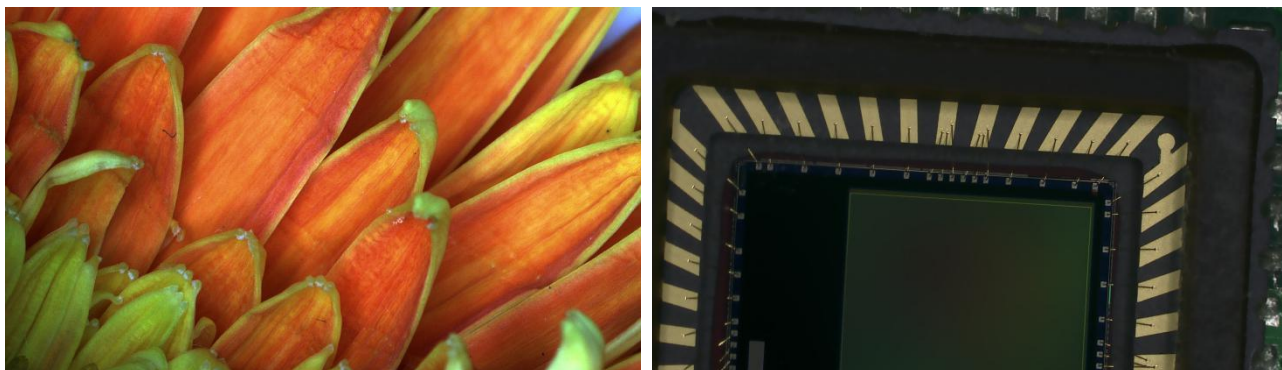
Note: ● Standard Outfit, ○ Optional

Eyepiece & Objective Parameter

Additional Objective		0.5×	1×(built-in)	2×
W.D		189mm	110mm	36mm
10XEyepiece/Φ22mm	Magnification	3.5×~22.5×	7×~45×	14×~90×
	Field dia. (mm)	62.9~9.8	31.43~4.89	15.71~2.44
15XEyepiece/Φ16mm	Magnification	5.25×~33.75×	10.×5~67.5×	21×~135×
	Field dia. (mm)	45.71~7.11	22.86~3.56	11.43~1.78

20XEyepiece/ Φ 12mm	Magnification	7 \times ~45 \times	14 \times ~90 \times	28 \times ~180 \times
	Field dia.(mm)	34.28~5.33	17.14~2.67	8.57~1.33

Sample Image



Dimension

Unit:mm

